

A photograph of two young children standing on a narrow wooden ledge against a green wooden wall. The child in the background is making a peace sign, and the child in the foreground is holding a plastic bottle. The scene is brightly lit, suggesting daylight.

[STAND]



world relief
annual report

FISCAL YEAR 2010

Table of Contents

Section	Page
The Local Church	3
The Vulnerable	5
Stand/For Women	7
Stand/For Children	11
Stand/For the Devastated	15
Stand/For the Displaced	19
Stand/For Opportunity	23
Reach and Impact	27
Manifesto	30
Financial Statements	31
Leadership	33

Photographic Contributors:
Benjamin Edwards, Kevin Kubota, Amanda Wingers, Matthew Sumi, David Uttley, Marianne Bach and Matthew Smith.

Cover Image:
Kevin Kubota
Phnom Penh, Cambodia
www.kubotaimagetools.com

From the President & CEO

WORLD RELIEF FRIENDS,
It gives me profound joy to see tens of thousands of people all around the world working together to prevent and alleviate suffering. Together with you, we are part of a growing movement of Jesus-followers giving our lives to bring hope to the vulnerable.

In 2010, in partnership with the local church, we impacted 4,092,652 people—empowering them to move from danger to safety, disease to health, hunger to food security, and poverty to opportunity.

Lives changed. Prayers answered.
Hope restored.

Why do we commit ourselves to this mission? How do we do it? Where do we work? Through these pages, you will learn the *why*, *how* and *where* of World Relief. You will discover our singular calling: to empower the local church to overcome suffering.

Thank you for dedicating yourselves to bringing the whole Gospel to the whole world. As we celebrate the past and consider the challenges ahead, I remember these words: “Whatever you do for the least of these, you do for Me.” The call of Christ is clear, and His love compels.

Thank you for following Jesus as we, together, stand for the vulnerable.



Stephan Bauman,
World Relief President & CEO

[EMPOWER] THE LOCAL CHURCH TO SERVE THE MOST VULNERABLE.

Why the local church?

POVERTY AND INJUSTICE are often understood to be economic conditions. While it's true many suffer from economies that don't work, money is only part of the puzzle. At World Relief, we believe poverty and injustice are also about relationships that don't work.

One reason we stand for the vulnerable by working through the local church is because the church is about relationships that do work. Following the Biblical example of Christ, churches teach and live out the message of forgiveness, reconciliation, service and love. As the love of God makes itself manifest in tangible ways such as neighbors caring for sick neighbors, farmers loaning tools to farmers, or families building homes for widows, relationships are strengthened and communities are refreshed.

**WITH A WORLDWIDE
NETWORK OF 2.3 BILLION
PEOPLE, THE CHURCH IS
THE LARGEST, MOST
DIVERSE SOCIAL NETWORK
ON THE PLANET.**

With such a global presence, the church is able to reach deep into the most remote, desperate, complex circumstances and offer the peace-filled strength of Christ. Unlike every other institution on the planet, the church is called to these hard places.

In the book of Psalms, God declares, "Because of the groaning of the needy and the cries of the vulnerable, I will now stand." At World Relief, we stand for the vulnerable by equipping the local church to rise with God and be the agent of hope and transformation it has been called to be.

The Church

SOCIAL NETWORK:
The worldwide Church is made up of 2.3 billion people.

CALLING: "The local church is the only institution on the planet that exists for the benefit of its non-members."
—Archbishop William Temple

[EQUIP] THE VULNERABLE TO TRANSFORM THEIR COMMUNITIES FROM WITHIN.

Who are the vulnerable?

THE VULNERABLE ARE members of our community who have been excluded from the conversation. They are women and children who have been pushed to the margins of society because of their gender and age. They are refugees viewed as aliens because of their different language, religion, or culture. They are victims of disaster isolated by their tremendous grief and loss. They are one billion of our global brothers and sisters who live beneath the crushing weight of extreme poverty.

At World Relief, we stand with and for the vulnerable.

**WE STAND FOR WOMEN,
FOR CHILDREN, FOR
THE DEVASTATED, FOR
THE DISPLACED, AND
FOR THE WORLD'S POOR.**

These brothers and sisters are consistently excluded from centers of power and prosperity, yet God is always calling his people to minister at the margins. The church is invited by God to go to the periphery and build relationships with the vulnerable so their skills, talent and love can come to the center of their own communities and transform their neighborhoods.

To learn how World Relief stands with the vulnerable and empowers them to meet the needs of their neighbors, we invite you to turn the page.

The Vulnerable

WOMEN: More than 900 million live in conditions of extreme poverty.

CHILDREN: 8.1 million children die every year from preventable diseases.

DISPLACED: More than 43 million people are currently displaced from their homes.

DEVASTATED: Disasters affect 208 million people a year.

POOR: 1.4 billion people live on less than \$1.25 per day.

IN 2010, WORLD RELIEF EQUIPPED 934,723 WOMEN TO TRANSFORM THEIR OWN COMMUNITIES.

TODAY, IN MANY REGIONS OF THE WORLD, women experience discrimination, subordination, slavery, abuse and limited choices. Prevented from providing adequate education, nutrition and health care for themselves and their families, they are repeatedly denied the opportunity to care for the things closest to their hearts. Despite these overwhelming obstacles, women have enormous potential to change their own circumstances and transform their families and communities.



A MOTHER'S LOVE

For mothers in rural Burundi, access to medical services is often limited. Thanks to World Relief's *Maternal & Child Health* program, volunteers teach mothers like this to adequately care for their children's needs.

Photo: Benjamin Edwards

Empowering women to transform the world.

MATERNAL & CHILD HEALTH

Mothers in rural communities often rely on age-old myths and misinformation to care for their sick children. In collaboration with local churches, World Relief trains local health volunteers to teach their neighboring mothers about the real causes of malnutrition, malaria and other leading causes of death.

In 2010, World Relief *Maternal & Child Health* efforts reached 730,578 mothers with lifesaving health messages. As mothers apply these lessons and see their children thrive, they share the

information with their neighbors and transform the health beliefs in their community forever.

ECONOMIC EMPOWERMENT

Women carry two-thirds of the world's workload and produce half of the world's food yet they only earn 10% of the world's income and own 1% of the world's property. Through economic empowerment, World Relief is helping women overcome this gender barrier and break free from poverty.

Last year, of the 232,940 active clients in the World Relief Micro-enterprise network, 93 % were

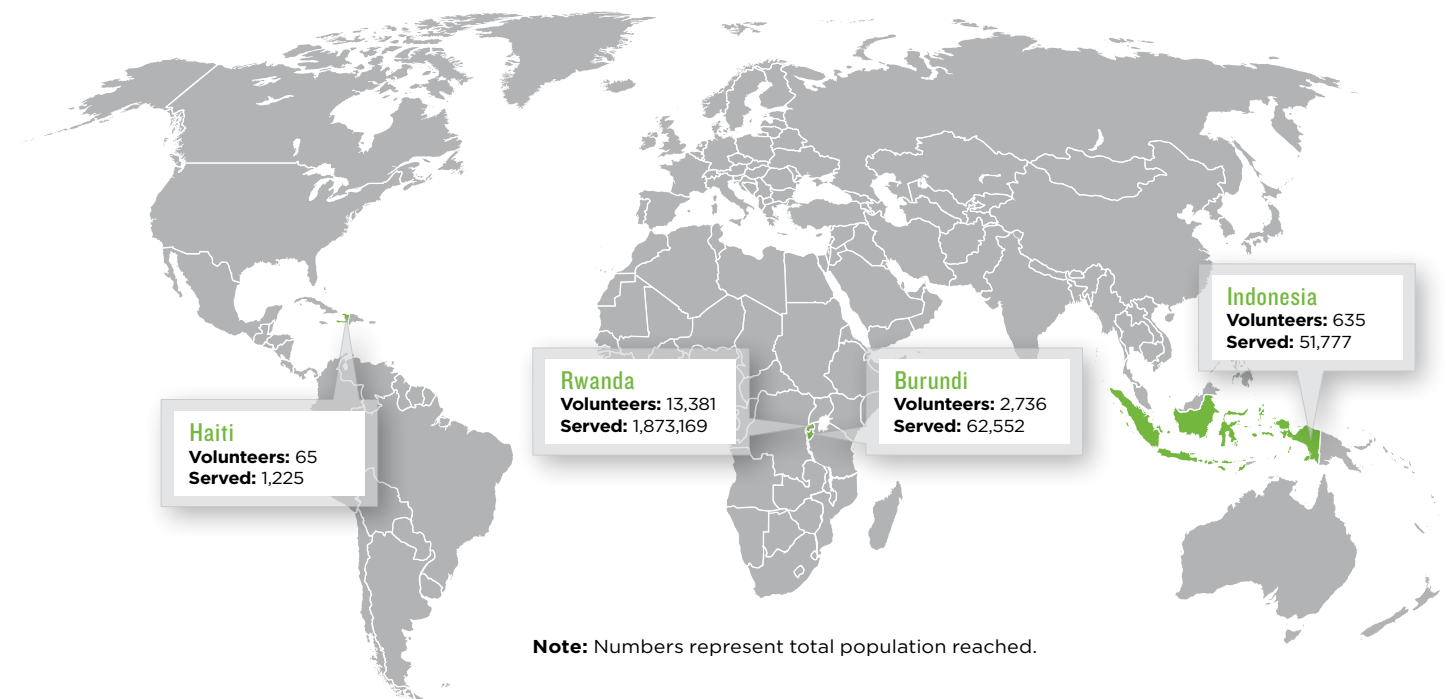
women. As they leverage loans, credit, agricultural training and small business development skills, their income increases, allowing them to care for their families and bless their communities. As a result, the World Relief Economic Development network indirectly impacted the lives of 941,529 people in 2010 (based on an average family size of 6).

ANTI-TRAFFICKING

In Cambodia, World Relief helps kids flourish through *Hope for Cambodia's Children*, a program that uses skits, songs and puppet shows to reach 39,000 children

PROGRAM SPOTLIGHT: MATERNAL & CHILD HEALTH

Through local church networks, volunteer participation and complete community coverage, World Relief's *Maternal & Child Health* program is impacting hundreds of thousands of lives.



a year with Bible lessons and health tips. To help prevent human trafficking, Word Relief incorporates safety lessons into the curriculum by teaching children how to identify child traffickers and avoid dangerous parts of town. In 2010, the *Hope* program also trained 8,290 community members to prevent human trafficking.

In the United States, World Relief began providing administrative support for the Faith Alliance Against Slavery and Trafficking (FAAST). FAAST mobilizes communities to generate a united and

active response to the injustices of slavery and human trafficking.

GENDER VIOLENCE

In the Democratic Republic of Congo, World Relief is partnering with local churches to stop violence against women and reverse the stigma associated with victims of gender violence. Workshops led by trained volunteers teach women practical tips about safety and help reduce violent encounters. *Compassion Groups*, made up of 8 to 12 volunteers, embrace victimized women in their community by caring for their mental, emotional and physical needs.

2010 Facts

MICROENTERPRISE: The average loan size for female microenterprise clients in Africa was \$123. In Asia, the average was \$262.

VOLUNTEERS: *Maternal & Child Health* efforts in Indonesia equipped 635 volunteers to reach 51,777 children, teens and mothers.

ANTI-TRAFFICKING: World Relief provided shelter, protection and rehabilitation services to 24 victims of human trafficking.

TAMPA: World Relief engaged local churches to assist 9 victims of human trafficking in Tampa, FL.

SNAPSHOTS: EMPOWERING WOMEN AND GIRLS



Maternal & Child Health group in Burundi



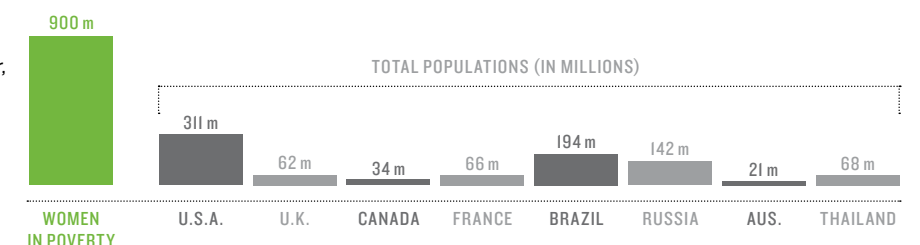
Cambodian girl equipped to avoid trafficking



Members of Compassion Group in Congo

HOW MANY IS 900 MILLION?

Over 900 million women live in extreme poverty. To reach this number, you would have to combine the total populations of the United States, the United Kingdom, Canada, France, Brazil, Russia, Australia and Thailand.



IN 2010, WORLD RELIEF GAVE **1,206,978 CHILDREN** A HEALTHY START TO LIFE.

THE NEEDS OF THE NEXT GENERATION are often compromised by disease, insecurity and poverty. But with loving parents and caring communities, children can overcome these threats and have a healthy start to life. Working through local churches, World Relief educates mothers to better care for their children, provides workshop to train volunteers to prevent AIDS in youth and equips communities to care for the physical needs of orphans.



STARTING STRONG

Children attending a *Child Development* kids' group in Cambodia learn health tips, HIV prevention and Bible lessons through songs, puppet shows and skits performed by World Relief volunteers.

Photo: Kevin Kubota

Helping to shape a generation—the next one.

MOBILIZING YOUTH FOR LIFE

In 2004, World Relief launched a project called *Mobilizing Youth for Life* (MYFL), an abstinence and behavior change program designed to prevent the spread of HIV/AIDS in Haiti, Kenya, Mozambique and Rwanda. The interactive peer-based learning program culminated in 2010 after reaching an astonishing 2,338,952 youth between the ages of 10-24. A tremendous success, the MYFL program exceeded the initial goal of 1.8 million by 25%.

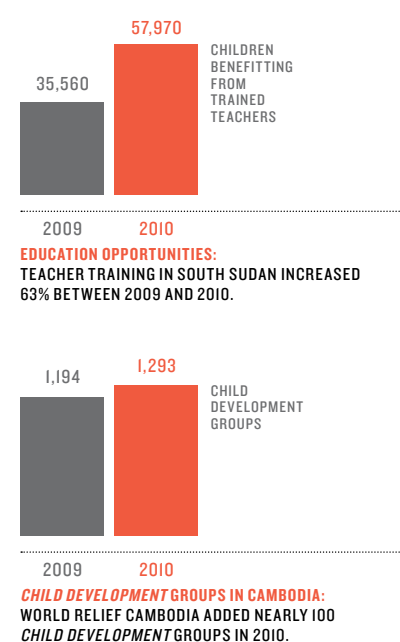
During the six-year project, 53,500 volunteers and peer educators were trained, 68,433 parents were

equipped to promote HIV prevention and World Relief partnered with 16,340 local institutions.

MATERNAL & CHILD HEALTH

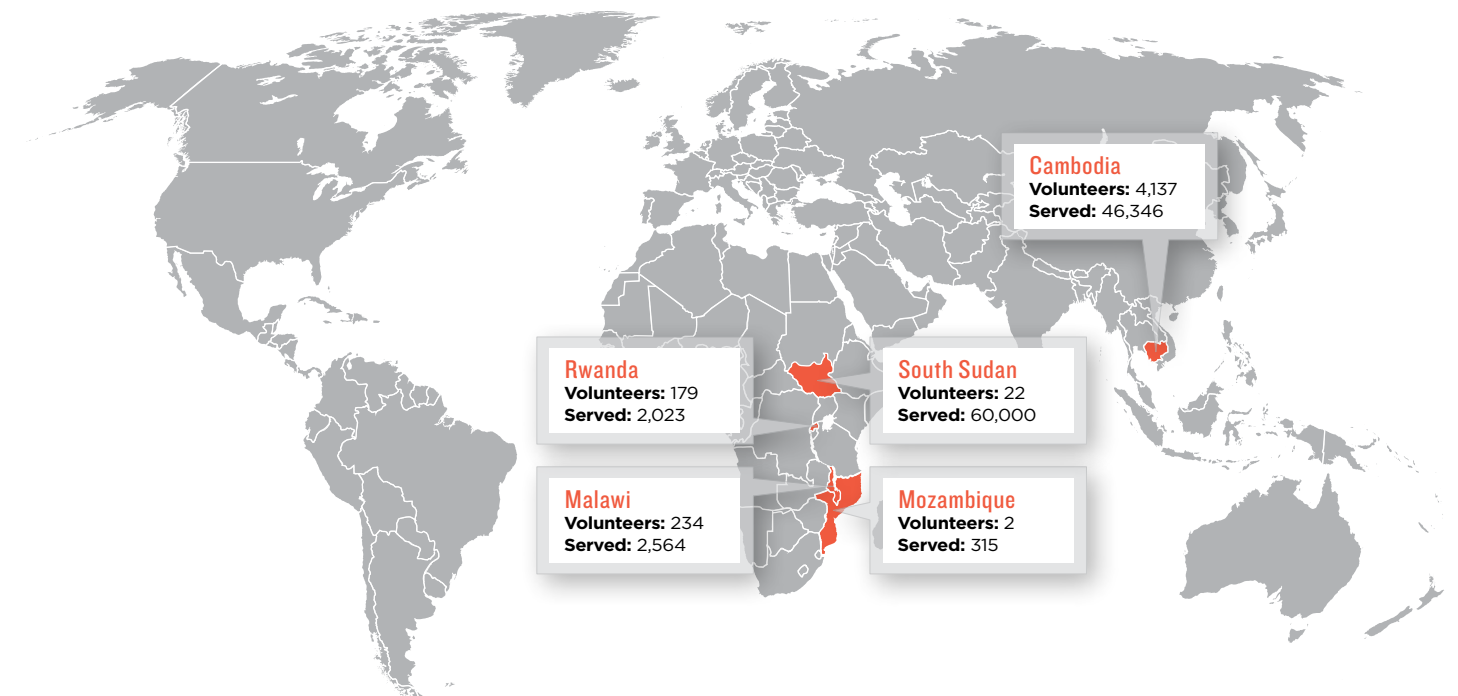
In rural communities where medical services are hard to access, education serves as a powerful tool to reduce child disease and mortality. Through World Relief's innovative *Care Group* community empowerment model, mothers are receiving the training they need to keep their children healthy.

In 2010, 535 *Care Group* staff members trained 41,817 volunteers to reach 3,446,753 mothers and



PROGRAM SPOTLIGHT: CHILD DEVELOPMENT

Adding more than 150 *Child Development* groups around the world in 2010, World Relief helped churches and families connect with children and teenagers in meaningful ways.



children with health, hygiene and nutrition messages. The result? Life threatening diseases like diarrhea, pneumonia and malaria are prevented, and children have a healthy start to life.

CHILD DEVELOPMENT

Through the *Child Development* program, World Relief encourages local churches to shape the future of the next generation by building healthy relationships with parents and children. Over the last year, *Child Development* groups in Cambodia grew from 1,194 to 1,293, impacting the lives of 46,346 children and teens.

TEACHER TRAINING

World Relief's *REACH* program in South Sudan, which operates kids' clubs, trains and equips local educators and encourages parents to participate in their child's education, trained 1,054 teachers to improve the education of 57,970 children, a 63% increase over the 2009 number of 35,560. At early childhood centers, World Relief helped care for 6,210 children by giving mothers a clean place to care for their kids. World Relief also operated 23 nursery schools with 270 students enrolled.

2010 Facts

MALARIA: Use of mosquito nets grew 15 times from 20,995 to 314,820.

HIV/AIDS: Of the 11,903 youth reached with abstinence messages in Cambodia and Indonesia, 5,486 made commitments to abstinence.

VOLUNTEERS: Over 4,100 volunteers worked to support the *Child Development* program in Cambodia.

CHILD DEVELOPMENT: Groups for children and teens increased from 1,317 to 1,392.

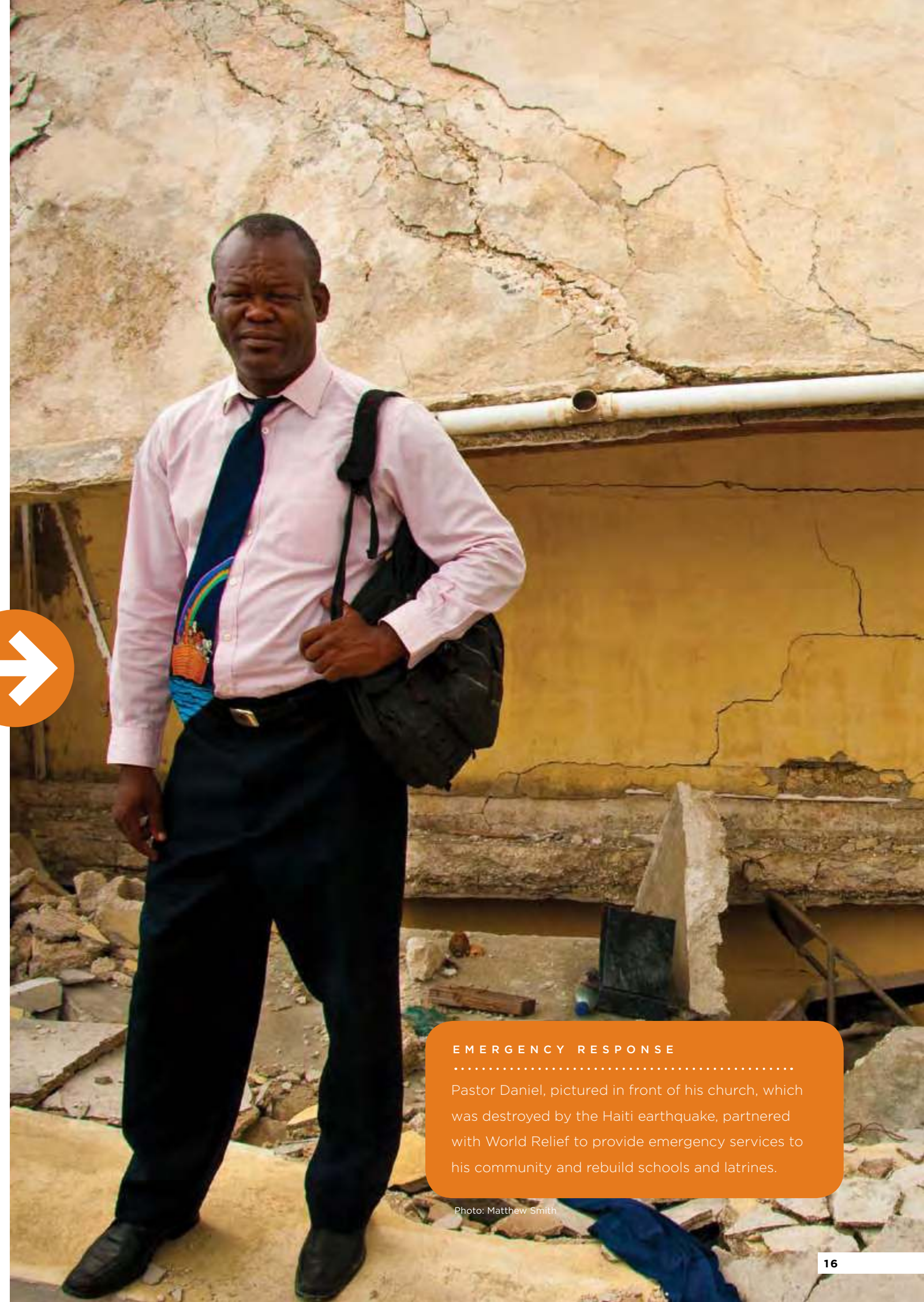
RWANDA IMPACT: The *Maternal & Child Health* program in Rwanda reached 318,000 children.

SNAPSHOTS: WORKING TO NURTURE CHILDREN



IN 2010, WORLD RELIEF AIDED **219,000 SURVIVORS** DEVASTATED BY DISASTER.

WITH THEIR FAMILIES MISSING, homes destroyed and livelihoods jeopardized, many victims of disaster have nowhere to turn for help. Thankfully, World Relief is able to serve the vulnerable in times of emergency by working through the vast networks of local churches. With intimate knowledge of the challenges in their community and resources on hand, churches are able to mobilize volunteers to distribute emergency supplies like food, water and shelter. Once the immediate needs have been met, World Relief continues to work with partners in disaster areas to accomplish long-term development goals.



EMERGENCY RESPONSE

Pastor Daniel, pictured in front of his church, which was destroyed by the Haiti earthquake, partnered with World Relief to provide emergency services to his community and rebuild schools and latrines.

Photo: Matthew Smith

Responding to disasters with long-term goals.

HAITI

On January 12, 2010 an earthquake measuring 7.0 struck just sixteen miles from Port-au-Prince, Haiti. Damage to the densely populated capital city, home to over 2,000,000 people, claimed the lives of an estimated 200,000, left more than 1,000,000 homeless and affected the lives of 3,000,000 Haitians.

Thanks in part to our seventeen-year presence in Haiti, World Relief was able to work through local church networks and play a significant role in the initial relief efforts. In the weeks and

months following the devastating earthquake we distributed 2,500 non-food items, 30,000 tarps and several thousand liters of water to reach a total of 96,000 disaster victims.

SUDAN

As ethnic disputes and border controversies continued to rage in Sudan, World Relief remained committed to the most vulnerable. In the unstable region of Darfur, World Relief operated 24 feeding centers to provide nutritious food to malnourished children and mothers. As a result, 16,728 pregnant women

and children under five received nutritious meals. Through three health clinics we were able to serve 70,000 patients and organize health education sessions for 47,100 community members. In South Sudan, where government capacity is limited, World Relief trained 1,054 teachers to improve the education of 57,970 children. 74,082 people were reached with health education messages and 7,414 were treated for malaria.

INDONESIA

In response to a 7.6 magnitude earthquake in Sumatra, In-

DISASTER SPOTLIGHT: HAITIAN EARTHQUAKE

WORLD RELIEF'S Disaster Response team was in Haiti within two days of the earthquake. Efforts in the initial emergency phase included water, meal and shelter distribution, plus long-term sanitation and construction projects.

Water

1,633,000 gallons of water distributed

Meals

1,327,440 meals provided

Temporary Shelter

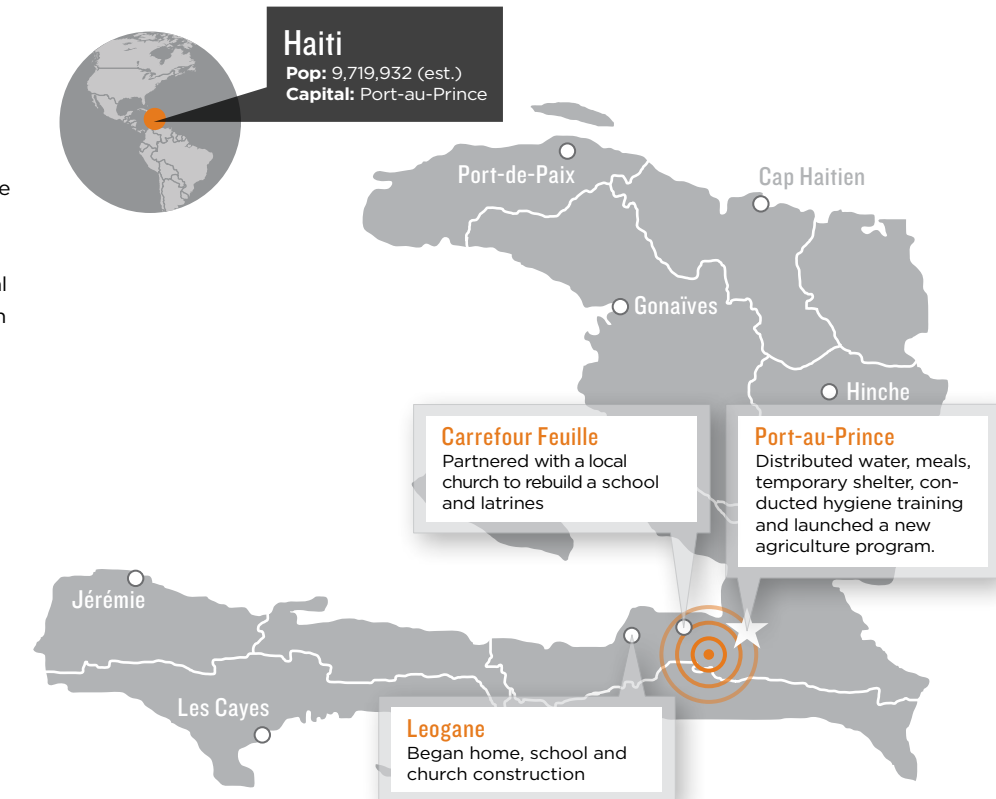
16,000 tarps delivered

Training

23,678 people trained in basic hygiene

Agriculture

Launched a program to assist 1,100 farmers in poultry and goat farming



onesia, World Relief worked with local churches to provide emergency food and non-food packets to 31,610 men, women and children, developed groups for rubble clean up, and assisted with the construction of earthquake resistant transitional shelters for 610 vulnerable families.

CHILE

Chile suffered its own earthquake February 27, 2010, and thanks to partnering organizations and the generosity of donors we served 2,500 survivors with immediate assistance.

PAKISTAN

Coming alongside the Pakistani people as they suffered the floods of July 2010, World Relief partnered with organizations to serve 500 people with tents and other non-food items.

CHINA

Through our partnering organizations in China, World Relief assisted 1,500 earthquake victims in 2010, including tent distributions to 330 families.

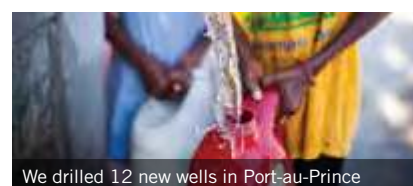
Obstacles in Haiti

POVERTY: Haiti was the poorest country in the Western Hemisphere prior to the earthquake, making it one of the most difficult places in the world to work.

DISEASE: Development progress has been hampered by outbreaks of cholera.

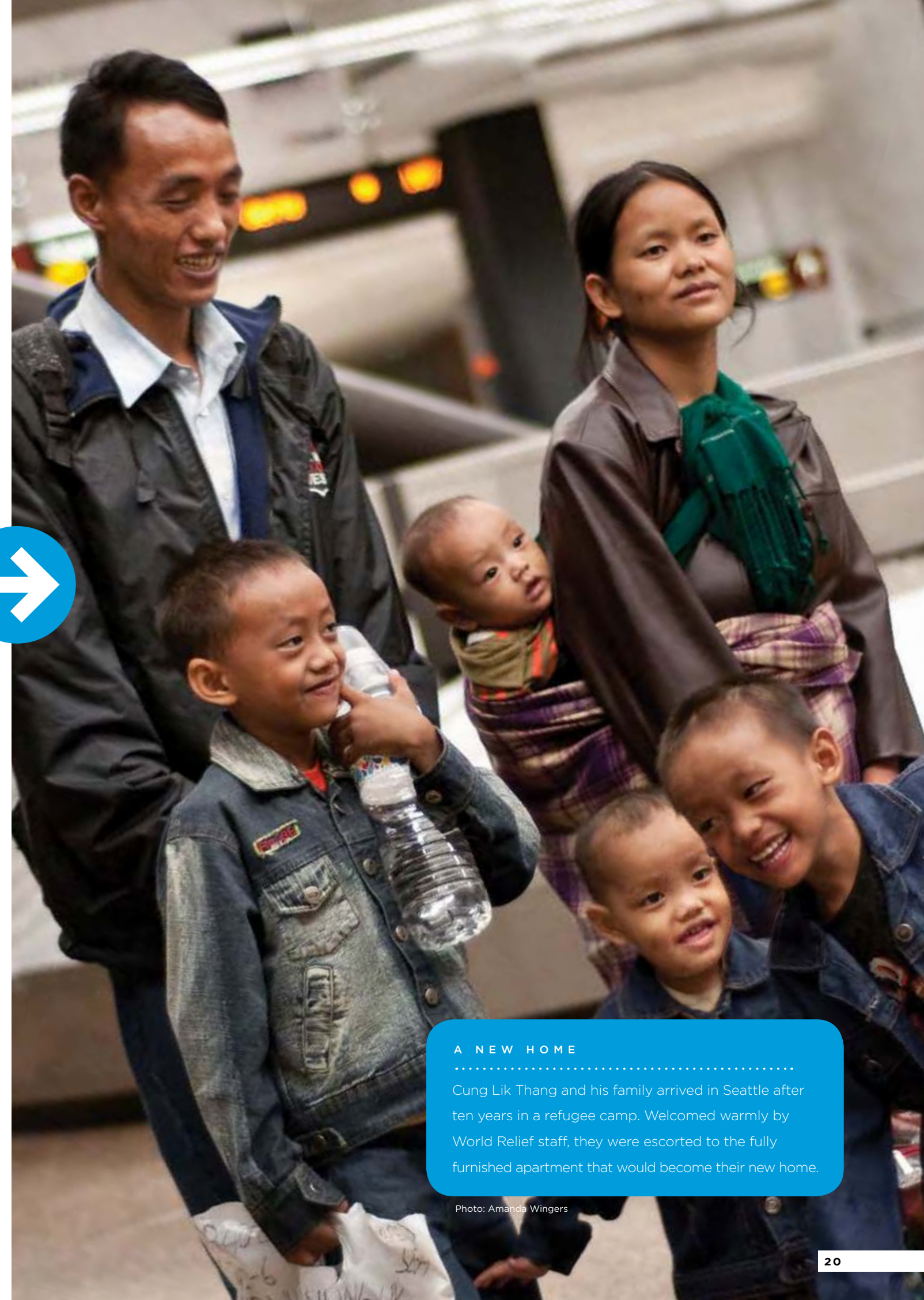
TRAUMA: Psychological trauma from the earthquake is a pressing issue and will remain a challenge for years to come.

SNAPSHOTS: HAITI IN RECOVERY



IN 2010, WORLD RELIEF HELPED 38,380 DISPLACED PEOPLE FEEL AT HOME.

EVERY YEAR, MORE THAN 1 MILLION PEOPLE flee poverty, conflict and disaster by immigrating into the United States. In search of a secure future, many foreigners are met with unanticipated challenges like discrimination, lack of opportunities, legal restrictions and continued poverty. To help immigrants and refugees overcome these obstacles, World Relief equips local churches to welcome their new neighbors to the community by providing legal services, language skills, job training, housing assistance and education opportunities.



A NEW HOME

Cung Lik Thang and his family arrived in Seattle after ten years in a refugee camp. Welcomed warmly by World Relief staff, they were escorted to the fully furnished apartment that would become their new home.

Photo: Amanda Wingers

Welcoming the displaced home to a new life.

REFUGEE RESETTLEMENT

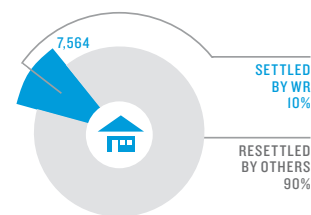
Since establishing our refugee resettlement ministry in 1979 to help Vietnamese refugees replant their lives in the United States, World Relief has become one of the leading resettlement organizations in the country. In 2010, we resettled 7,564 refugees, more than 10% of all refugees entering the United States.

Beginning by welcoming refugees at the airport upon arrival, we walk with refugees as they learn to navigate a new culture. By providing a comfortable place to live, English classes, job training, and little

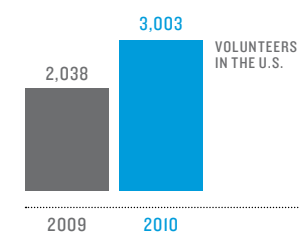
things like backpacks with school supplies, World Relief equips refugees to become fully engaged community members.

Thanks to the effort of local churches, the number of volunteers working with refugees and immigrants in 2010 increased almost 47% from 2,038 to 3,003. As a result, more than 61,000 volunteer hours were committed to refugees and immigrants.

An important part of the resettlement process, volunteers are responsible for helping refugees acclimatize to a new culture. By



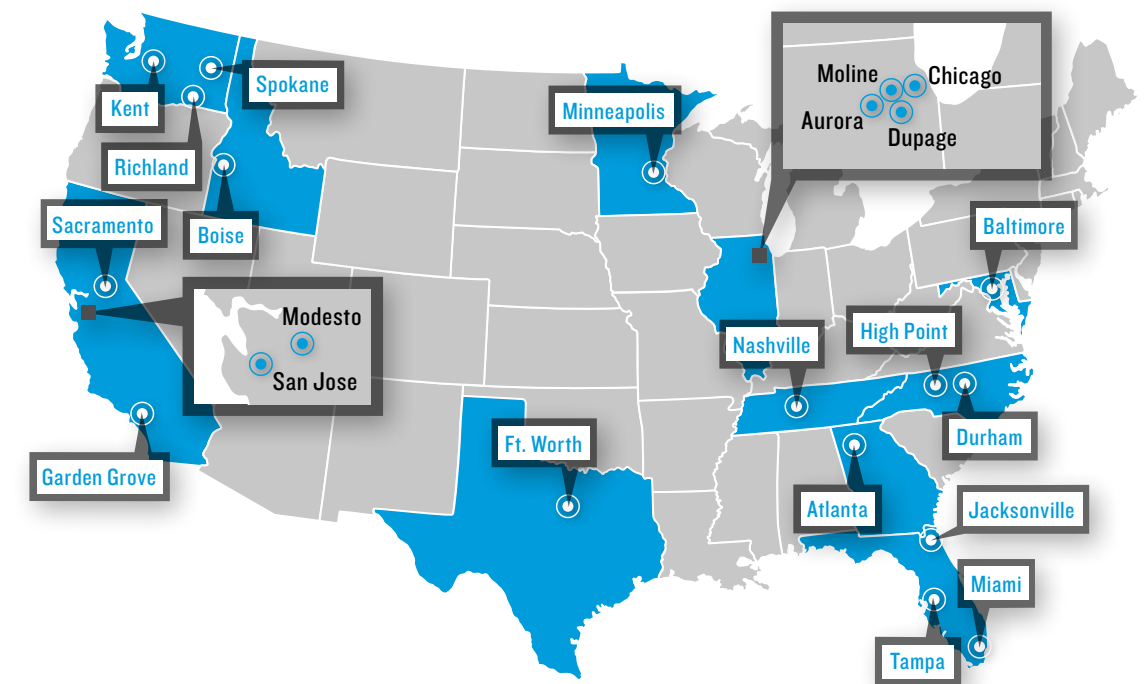
WELCOME HOME: TEN PERCENT OF ALL REFUGEES ENTERING THE UNITED STATES ARE RESETTLED BY WORLD RELIEF.



VOLUNTEER POWER: VOLUNTEER CAPACITY IN THE UNITED STATES INCREASED 47% BETWEEN 2009 AND 2010.

PROGRAM SPOTLIGHT: U.S. MINISTRIES

World Relief has 22 offices in the United States specializing in refugee resettlement, immigrant services, ESL classes, job training, citizenship assistance, legal counsel and human trafficking prevention.



helping with simple tasks like programming an answering machine, buying groceries and utilizing public transit, volunteers help refugees adapt to their new surroundings. More importantly, volunteers build long lasting friendships with refugees, helping to alleviate the loneliness and isolation that many refugees feel as they learn to call the United States home.

LEGAL SERVICES

Refugees and immigrants face complicated legal issues regarding employment, family reunification and citizenship. With 22 World Relief offices around the United

States featuring certified legal specialists, we provided legal assistance to 30,816 clients in 2010.

PEACE BUILDING

In war torn areas such as the Democratic Republic of Congo, World Relief works with local churches to meet the needs of internally displaced people by bringing peace and stability to the region. Through food security programs, gender violence prevention, HIV/AIDS prevention and microenterprise, World Relief is helping many internally displaced people return home and restore their livelihoods.

2010 Facts

PEOPLE GROUPS: The largest refugee groups resettled in 2010 were Iraqi, Bhutanese, Burmese and Somali.

SEATTLE: World Relief Seattle resettled 890 refugees in 2010—its largest number ever.

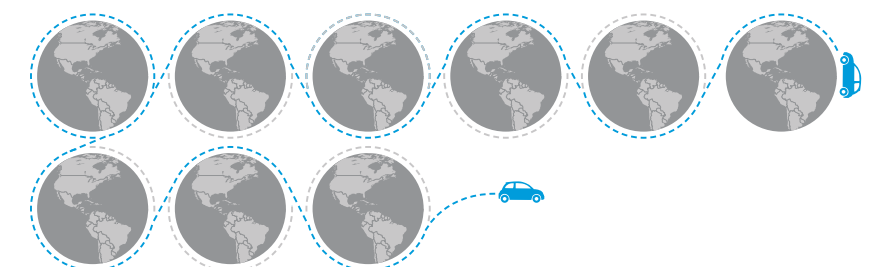
PEACE: World Relief is equipping 8 different pastoral committees to help build peace and allow displaced people to return home in the eastern territory of the Democratic Republic of Congo.

SNAPSHOTS: WELCOMING NEW NEIGHBORS



DRIVING AROUND THE WORLD

In 2010, World Relief volunteers working with refugees and immigrants in the United States drove 230,688 miles—the equivalent of driving around the earth more than nine times.



IN 2010, WORLD RELIEF EMPOWERED 232,940 CLIENTS WITH FINANCIAL SERVICES.

FOR DECADES, WORLD RELIEF has been working with local churches and institutions in post-conflict areas and complex humanitarian emergencies to provide financial services to the poor. Through microenterprise, agribusiness, small business development and savings group, clients gain access to credit, loans, training and tools to develop their skills and resources to better their economic situations. As a result, clients have the capacity to expand their business, increase their income and meet the monthly needs of their family while contributing to the care of the vulnerable in their community.



ROOM FOR GROWTH

.....
A small restaurant owner in Cambodia prepares for the lunch crowd. Thanks to loans and savings provided through World Relief she has modified her business practices, increased her income and improved the living conditions of her family.

Photo: Kevin Kubota

Turning laborers into entrepreneurs.

MICROENTERPRISE

Since its inception in 1990, the World Relief Economic Development Network has experienced both continued growth and impact. During 2010, the number of active clients participating in World Relief's network increased 6% from 219,448 to 232,940 with loans outstanding reaching \$63,390,000.

In Africa, 89,846 economic development clients spread out through Burundi, Rwanda, The Democratic Republic of Congo, Mozambique, Zambia and Liberia took out loans averaging \$123.

In Asia, Cambodia's economic development institution, *Credit Cambodia*, operated at 121% self-sufficiency with only 2.0% of the loan portfolio at risk. In India, World Relief's partner institution, *Society for Microenterprise Activity*, had 4,016 clients taking average loans of \$232.

Currently, six institutions in the World Relief network have matured from small operations requiring donations and oversight to large organizations featuring hundreds of employees, self-governing boards, contracts with local creditors and thousands of clients.

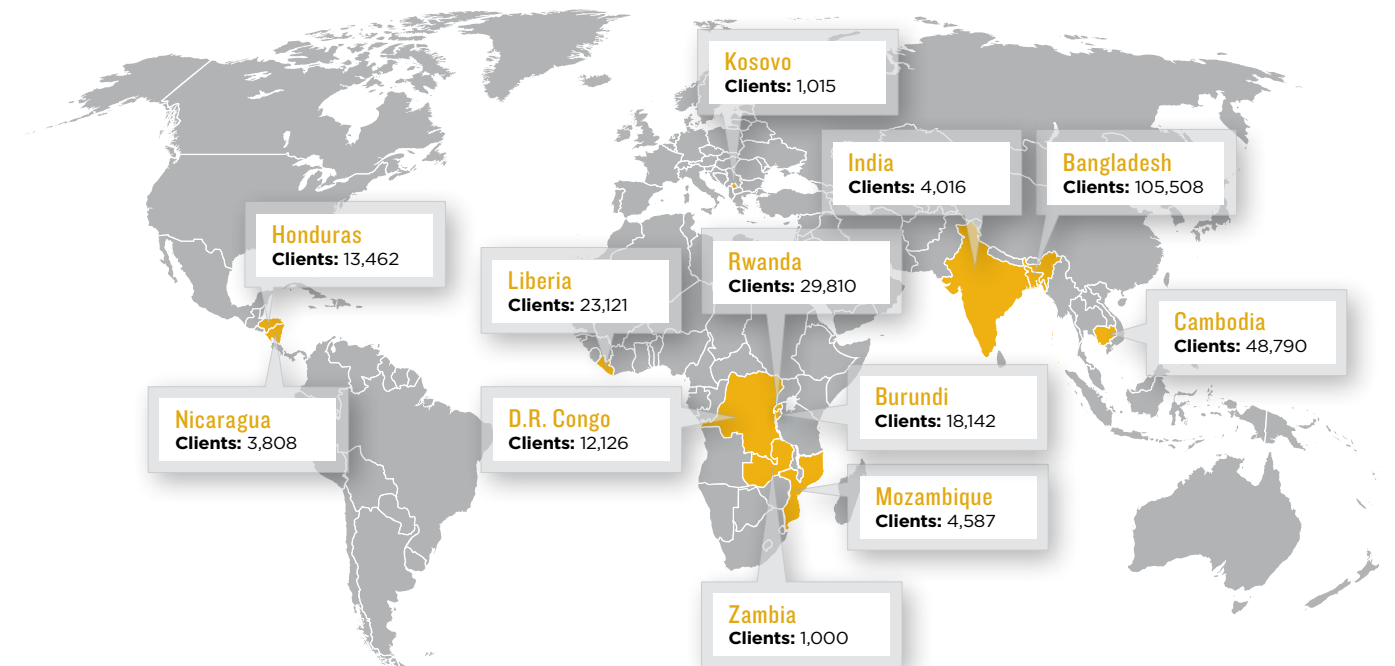
SMALL BUSINESS DEVELOPMENT

By assisting small business owners with financial resources and technical training in areas like technology integration, marketing, investing, supply chains and quality control, World Relief helps establish strong local economies that generate job opportunities and sustainable growth.

In Nicaragua, the second poorest country in the western hemisphere, World Relief helped establish the association Pueblos en Acción Comunitaria (PAC) in 1996 to develop strong, local agri-businesses. Strengthening

PROGRAM SPOTLIGHT: WORLD RELIEF ECONOMIC DEVELOPMENT NETWORK

Due to the success of the World Relief Economic Development Network, World Relief currently has \$63,688,647 in loans outstanding, nearly \$8,000,000 in client savings and a global portfolio at risk of just over 3%. These countries feature institutions that provide opportunities for agri-business, savings, small business development and micro enterprise.



the institutional capacity, self-sustainability and corporative integration of small agribusinesses, PAC has generated 6,000 jobs and provided agricultural extension, marketing services and credit to 3,808 producers.

AGRICULTURE

With most of the world's poor surviving by subsistence farming, they are incredibly vulnerable to natural disasters and insufficient harvests. By providing agricultural training and access to financial services, World Relief empowered 138,464 farming families in 2010 to improve their techniques,

increase their yield and grow their annual income. Based on an average family size of 6, 2010 agricultural development efforts reached 692,320 beneficiaries.

SAVINGS GROUPS

To help the world's most vulnerable guard against financial insecurity, World Relief operates an innovative program called *Savings for Life*. Through accountability groups, lock boxes and biblical trainings on money, World Relief helped 17,000 clients save more than \$100,000 in 2010. 70% of all *Savings For Life* group members are female.

2010 Facts

CLIENTS: 93% of World Relief Economic Development clients are female.

SUFFICIENCY: Currently, six institutions in the World Relief Economic Development Network have reached the status of complete self-sufficiency.

SAVINGS: *Savings for Life* groups in Africa experienced a 22% membership growth rate.

SNAPSHOTS: OVERCOMING THE POVERTY TRAP



Credit helps shop owners increase sales



Loans allow shops to diversify inventory



Agribusiness principles increase production

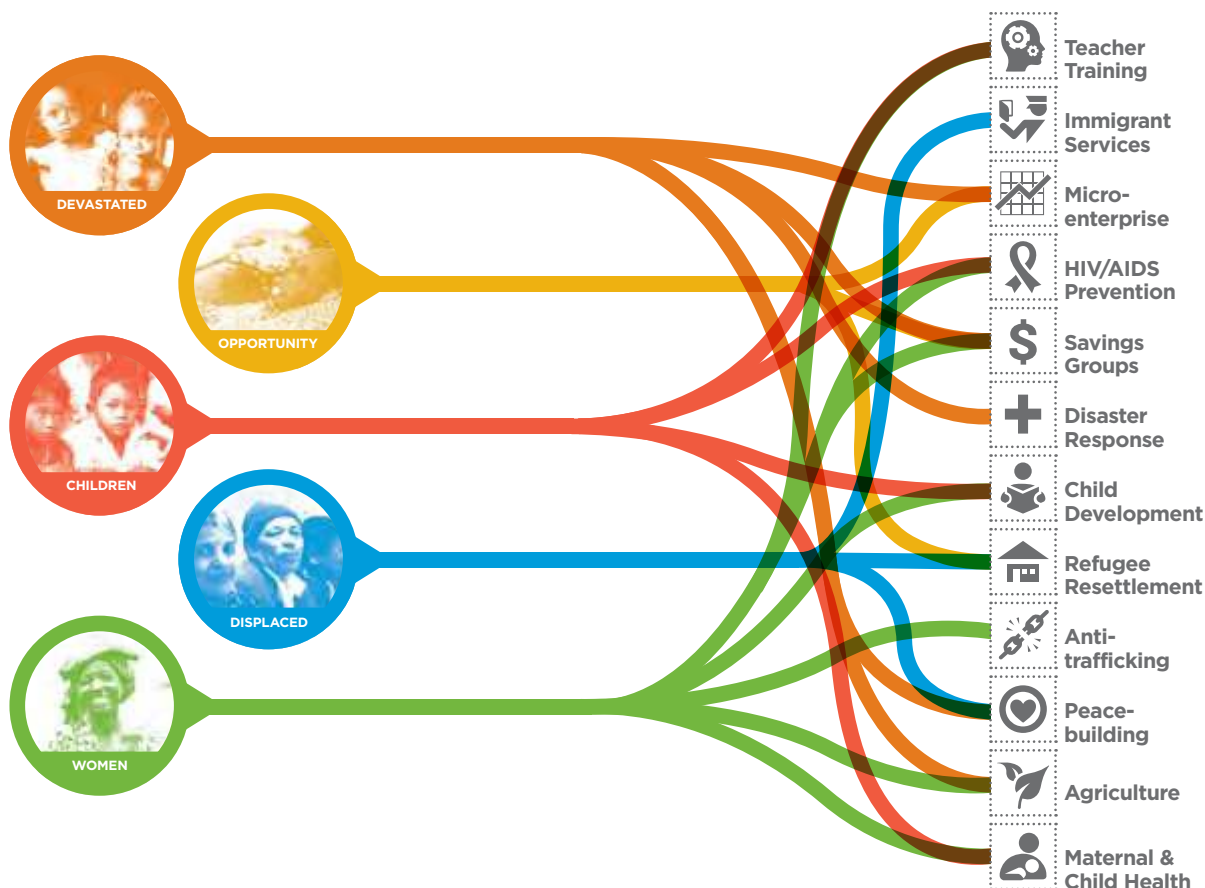
FARMING THE WORLD

In 2010, World Relief worked with farmers to cultivate 19,240 hectares of land, which is equivalent to 47,543 acres, or roughly 36,301 football fields.



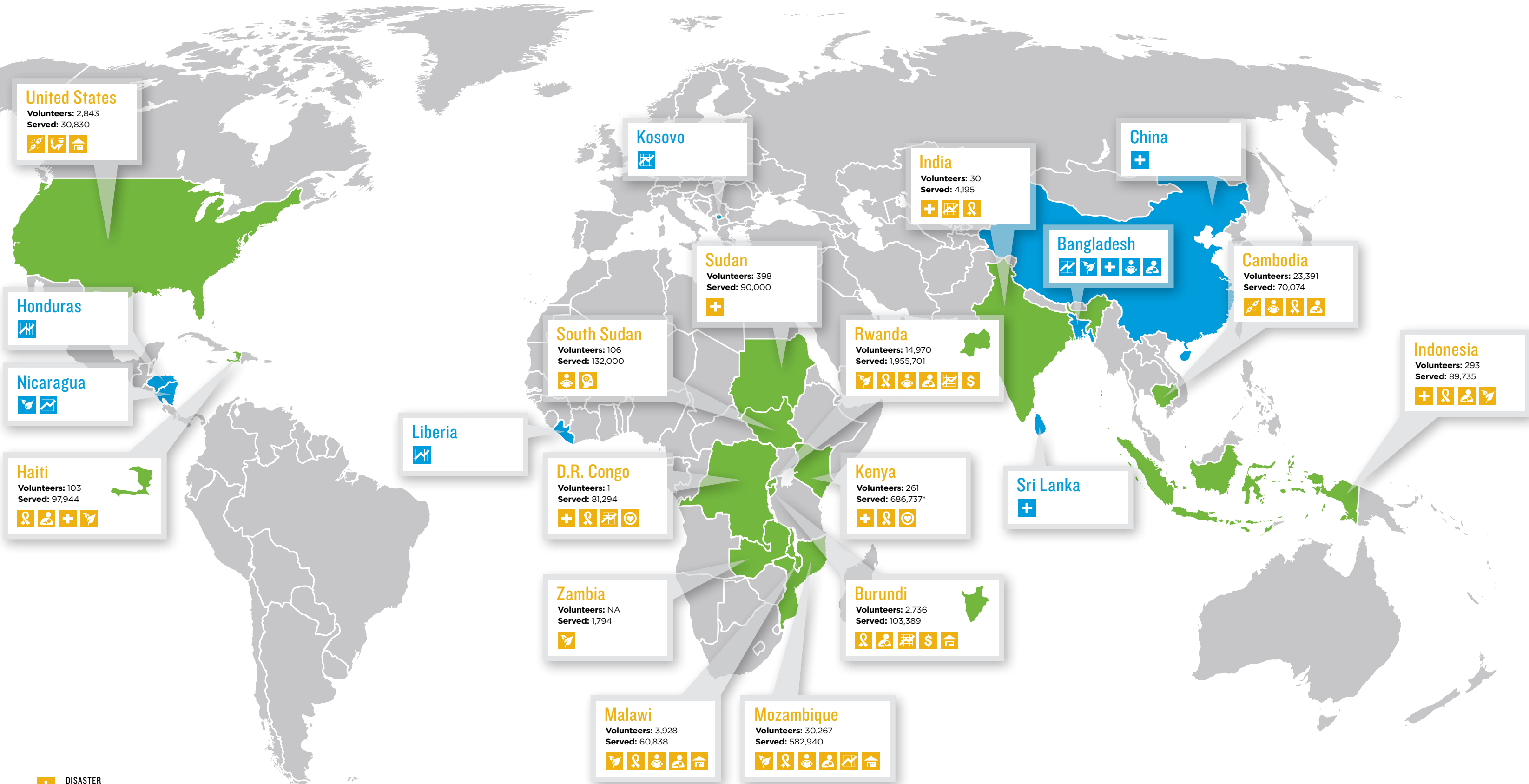
We empower the largest social network on the planet.

POVERTY, INJUSTICE AND SUFFERING are not the result of a single issue—we work with churches to meet a variety of needs. Whether hunger or hopelessness, disease or doubt, malnutrition or mourning, World Relief’s integrated programs work together to serve women, children, the displaced, the devastated and the poor. The result? Churches have the capacity to fulfill their mission and meet the physical, spiritual, mental and emotional needs in their communities.



Global Reach and Impact

Thanks to the faithfulness and generosity of partners and donors in 2010, World Relief staff in 20 countries equipped more than 2,500 churches to empower 60,000 volunteers to reach out and serve 4,000,000 of their most vulnerable neighbors. We are truly honored to share the motivation of Christ's love with you as partners in the great work of empowering the church to serve the vulnerable.



***Including 653,000 reached through community events**

Note: Due to the complex circumstances in which World Relief operates, counting beneficiaries and volunteers is an incredibly difficult task. Though we employ best practices and meet professional standards, all numbers included in the annual report are to be taken as an approximation.

A NEW ERA: PAST, PRESENT AND FUTURE.

Over the last sixty-six years World Relief has responded to the most complicated humanitarian emergencies in the world. In 1944, we first met the needs of widows and orphans in war-torn Europe with food and clothing. Through the 1950s we expanded to serve orphans in Korea and lepers in Taiwan.

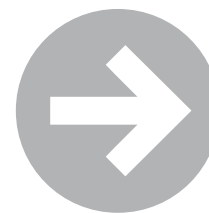
In the 1960s we aided Korean flood victims and earthquake survivors in China while addressing food shortages in Burundi and Chile. As conflict escalated in Vietnam in the 1970s, World Relief served displaced Vietnamese

with food, medical services and a refugee resettlement ministry in the United States.

In the 1980s, World Relief and partnering churches responded to disasters in Mexico, Columbia, El Salvador, Bangladesh, India and West Africa. When ethnic tensions in the 1990s claimed hundreds of thousands of lives in places like Rwanda and Croatia, World Relief responded with trauma care and long-term development goals. Through the 2000s, World Relief continued to fight global killers like HIV/AIDS, diarrhea, tuberculosis and malaria.

No matter where or how long it has taken us, over the past sixty-six years the commitment of World Relief has remained unchanged—we empower the local church to serve the most vulnerable. In 2010, our long-standing legacy of service and compassion entered a new era. With a refreshed logo and refined call to action,

**WE ARE MOTIVATED TO
LIVE OUT OUR MANIFESTO
AND STAND/FOR THE
VULNERABLE.**



[MANIFESTO] THERE IS TOO MUCH SUFFERING

in our world. Every year hundreds of thousands of victims are forced to flee their homes. Every day, poverty prevents hundreds of millions of people from meeting basic needs. Every 3.6 seconds someone dies from hunger.

While many are heroically doing something, God longs for the broadest, most diverse social network on the planet – the Church – to rise up like never before and engage in the great causes of our time. To feed the hungry. To heal the sick. To house the homeless. To meet the needs of our neighbors.

God is calling individuals, communities and the Church to champion the cause of the poor and serve the worlds most vulnerable.

At World Relief, our calling is to stand in the gap connecting churches in the United States with local churches abroad to empower them to serve the suffering in their own communities.



Statement of Financial Position

For the year ending September 30, 2010

Assets	2010
Cash and cash equivalents	\$ 9,667,497
Investments, at market *	\$ 218,846
Other investments *	\$ 884,249
Receivables:	
Grants	\$ 3,745,021
Pledges (note 4)	-
Other	\$ 233,730
Microenterprise and agricultural loans — net *	\$ 41,924,130
Prepaid expenses and other assets	\$ 1,202,949
Agricultural assets to be transferred	\$ 300,000
Plant and equipment — net of accumulated depreciation *	\$ 3,786,187
Total assets	\$ 61,962,609

Liabilities and Net Assets

Liabilities	2010
Accounts payable and accrued liabilities	\$ 4,311,938
Deferred revenue	\$ 124,983
Other Liabilities	\$ 3,217,287
Agricultural assets to be transferred	\$ 300,000
Long-term debt: *	
General	\$ 3,252,779
Microenterprise / Agricultural development	\$ 30,156,491
Total Liabilities	\$ 41,363,478

Net Assets

Unrestricted	
Common stock, \$100 par value; 500 shares authorized; 10 shares issued and outstanding	1,000
Net assets	\$ 16,476,320
Total unrestricted net assets	\$ 16,477,320
Temporarily restricted net assets*	\$ 4,121,811
Total net assets	\$ 20,599,131
	\$ 61,962,609

Statement of Activities and Changes in Net Assets

Support and Revenue	Unrestricted	Temporarily Restricted	2010 Total
Contributions and non U.S. federal, state, and local gov't grants	\$ 3,276,449	\$ 19,029,234	\$ 22,305,683
U.S. federal, state, and local government grants	\$ 32,713,834	-	\$ 32,713,834
Other revenue	\$ 12,890,134	-	\$ 12,890,134
Net assets released from restrictions *	\$ 16,158,580	(\$ 16,158,580)	-
Total support and revenue *	\$ 65,038,997	\$ 2,870,654	\$ 67,909,651

Expenses

Program Ministries:			
USA Programs	\$ 24,443,107	-	\$ 24,443,107
Overseas Programs	\$ 21,083,319	-	\$ 21,083,319
Disaster Response	\$ 8,803,057	-	\$ 8,803,057
Total program ministries	\$ 54,329,483	-	\$ 54,329,483
Support Ministries:			
General and administrative	\$ 6,371,473	-	\$ 6,371,473
Fundraising	\$ 4,010,070	-	\$ 4,010,070
Total support ministries	\$ 10,381,543	-	\$ 10,381,543
Total expenses	\$ 64,711,026	-	\$ 64,711,026
Excess (deficit) of revenue after expenses	\$ 327,971	\$ 2,870,654	\$ 3,198,625

Other Changes

Transfer of microenterprise assets and related income and expense *	\$ 300,000	-	(\$ 300,000)
Change in net assets	\$ 27,971	\$ 2,870,654	\$ 2,898,625

Net Assets

Beginning of year	\$ 16,449,349	\$ 1,251,157	\$ 17,700,506
End of year	\$ 16,477,320	\$ 4,121,811	\$ 20,599,131



A higher standard.
A higher purpose.

*Please note that this statement is abbreviated.

The complete audited financial statements with auditor's opinion and notes are available from our website: www.WorldRelief.org.

You may also write to:
World Relief
Attn: Donor Services
7 E Baltimore Street
Baltimore, MD 21202

Board of Directors

CHAIRMAN

Rev. Scott Arbeiter,
Elmbrook Church

VICE CHAIRMAN

Steve Moore,
Mission Exchange

SECRETARY

Rev. Dr. Derrick Harkins,
Nineteenth Street Baptist Church

TREASURER

John Griffin,
AARP

Rev. Leith Anderson,
National Association of Evangelicals

Katherine Barnhart

Rev. Paul Borthwick,
Development Associates International

Rev. John Chung,
Park Street Church

Dr. Judith Dean,
Brandeis University

Tim Breene,
Accenture Interactive

Rev. Casely Essamuah,
Bay Area Community Church

J. Stephen Simms,
Simms Showers LLP

Dr. Timothy Ek,
Deer Brook Covenant Church

David Husby,
Covenant World Relief

Dr. Roy Taylor,
National Association of Evangelicals

Mrs. Kathy Vaselkiv

Bill Westrate,
Veolia Environmental Services

Rev. Sanders Willson,
Second Presbyterian Church

Major George Polarek,
Salvation Army World Services

World Relief Leadership

STEPHAN BAUMAN,
President & CEO

KEVIN SANDERSON,
SVP Information Systems,
Program Quality and Metrics

DAN BROSE,
SVP International Programs

DAN KOSTEN,
SVP U.S. Programs

CONNIE FAIRCHILD,
VP Advancement

DON GOLDEN,
SVP Marketing and Church Engagement

BARRY HOWARD,
CFO/VP of Finance and Administration

JOHN GICHINGA,
Director of Spiritual Formation



STAND/FOR THE VULNERABLE™
www.worldrelief.org

