

# SCOPE HIV

STRENGTHENING COMMUNITY HEALTH OUTCOMES THROUGH POSITIVE ENGAGEMENT HIV

## SUMMARY

SCOPE HIV is a two-year project focused on HIV prevention, case finding, referral, and the return to care, and raising awareness and justice for children by engaging faith communities, men and youth, and girls and young women at the grassroots level.

## PROGRAM GOAL

Contribute to Malawi's achievement of the 95-95-95 goals.

## PROGRAM COUNTRIES

Malawi

## PERIOD OF PERFORMANCE

October 2020 – September 2022

## DONOR

The U.S. President's Emergency Plan for AIDS Relief (PEPFAR) through USAID/New Partnerships Initiative (NPI)

## PARTNER

Ujamaa Pamodzi

## *Messages of Hope*

Faith leaders play a key role in helping communities break the silence around HIV and dispel common myths. SCOPE HIV will engage nearly 1,400 faith leaders to reduce HIV stigma and promote positive messages about available testing, care, and treatment for HIV. Faith leaders will reach 70,000 people with HIV treatment literacy.

## *Male Champions*

HIV+ men will be recruited to seek out previously undetected or unretained young men living with HIV. 1,300 HIV+ men will reach nearly 16,000 other men and youth with adherence support.

## *HIV Testing, Linkage and Retention*

SCOPE HIV trains volunteers to assess HIV risk, distribute HIV self-tests, support health facilities with index-testing, and link those who test positive to facilities to initiate or return to treatment. SCOPE HIV will navigate over 1,000 previously undetected men and youth into care, and over 700 men and youth back to care.

## *IMPower*

In partnership with Ujamaa Pamodzi, SCOPE HIV will teach girls and boys ages 9-14 positive gender norms, self-defense, and bystander intervention skills. 39,000 children will participate and SCOPE HIV will prevent up to 2,800 cases of sexual violence against children.

## *SASA! Faith*

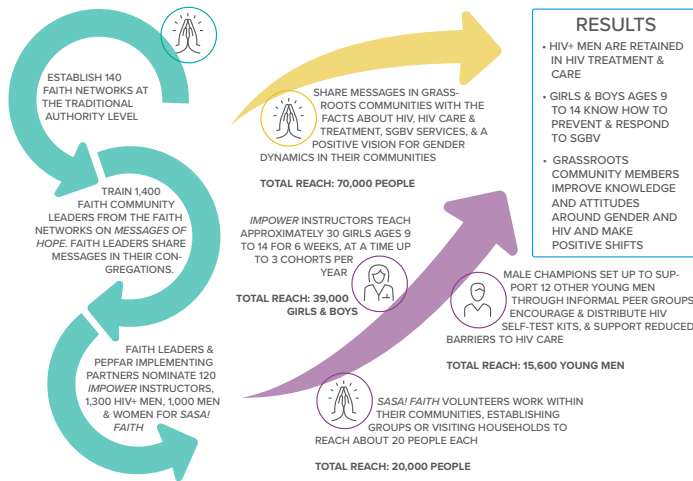
SCOPE HIV will implement *SASA! Faith* to transform harmful community norms and attitudes about gender and HIV. 1,000 community members will design and implement action plans reaching at least 20,000 households.

## TECHNICAL INTERVENTIONS

SCOPE HIV layers evidence-based approaches and saturates traditional authorities in priority districts in need of aggressive scale-up to meet Malawi's 95-95-95 goals (95 percent of people living with HIV know their status; 95 percent of people who know their status are on treatment; and 95 percent of people on treatment with suppressed viral loads).



## DELIVERY STRATEGIES



### Reaching Households

SASA! Faith volunteers will reach their social networks (neighbors, faith communities, and extended family members) and influence change in gender norms shown to reduce violence against women and HIV-related risk behaviors.

### Reaching and Safeguarding Children

SCOPE HIV will keep children safe and model how to implement child protection for community partners through supporting policies, training, and monitoring about child safeguarding.

### Reaching Men and Youth

SCOPE HIV supports grassroots activities driven by the needs and wants of men and youth living with HIV including traditional adherence and peer support groups, couples' support groups and sports groups.

### Coordinating Community-level Support

SCOPE HIV works with communities to map, link, and make referrals between formal and informal supports at the grassroots level for HIV and sexual and gender-based violence services.

### Supervision and Quality Assurance

SCOPE HIV staff supervisors and promoters will gather small groups of trained volunteers (Male Champions, SASA! Faith mobilizers, and grassroots faith leaders) monthly for ongoing training, supervision, and support. These groups provide an additional 52 hours of training and mentorship annually and quarterly observation. This approach improves the demand for health services and double intervention coverage.

### CONTACT

Eeva Sallinen Simard  
SCOPE Chief of Party  
esimard@wr.org  
[worldrelief.org](http://worldrelief.org)

