

# SCOPE

STRENGTHENING COMMUNITY HEALTH OUTCOMES THROUGH POSITIVE ENGAGEMENT

## SUMMARY

SCOPE is a five-year reproductive, maternal, newborn and child health (RMNCH) project working to ensure that women and caretakers adopt healthy behaviors and seek necessary care, and that quality and accessible community health services are available for all mothers and children.

## PROGRAM GOAL

Contribute to the reduction of preventable maternal and child mortality and morbidity.

## PROGRAM COUNTRIES

Haiti, Kenya, Malawi, South Sudan

## PERIOD OF PERFORMANCE

October 2019 - September 2024

## DONOR

USAID/New Partnerships Initiative (NPI)

## PARTNER

Christian Connections for International Health (CCIH)

## TECHNICAL INTERVENTIONS

The SCOPE project focuses on three key technical areas that look at women of reproductive age and children under five through a life-cycle approach from pre-conception to early childhood that can drastically improve their chances of survival.

### Family Planning/Reproductive Health

SCOPE trains community of health workers using vetted ministry of health/donor approved curricula on effective counsel and provision of community-based family planning information and methods, and how to make referrals for long-acting and permanent methods (LAPMs) and long-acting and reversible contraception (LARCs). Communities also receive similar messages through faith actors and community groups such as Care Groups, and Savings Groups.

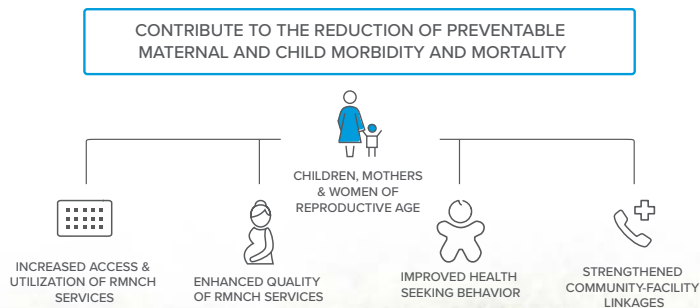
### Maternal and Newborn Care

SCOPE trains community health workers to provide timed and targeted messages on community-based maternal and neonatal care, (including home-based postnatal care), care of small and sick babies (including home-based Kangaroo Mother Care), and recognition of danger signs and referrals for complications during antenatal and postpartum periods for both mother and newborn. SCOPE supports pregnant women to receive health messages through Care Groups.

### Prevention and Appropriate Treatment of Childhood Illness

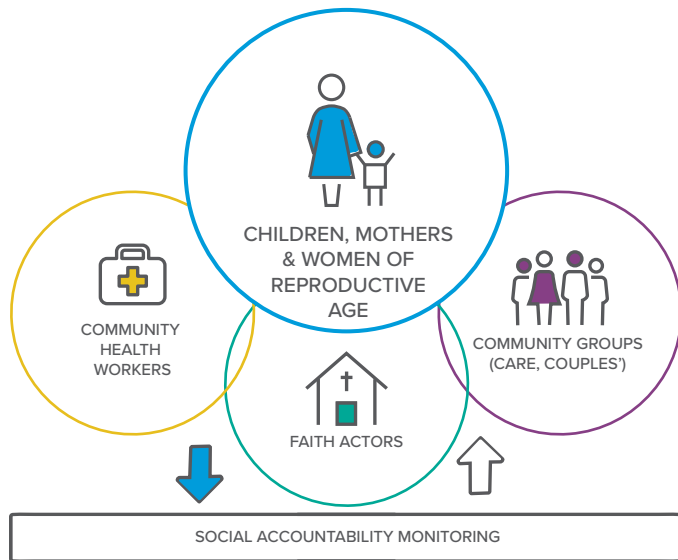
SCOPE improves caregiver capacity to seek early care for common childhood illnesses and supports community health workers to provide prompt and appropriate treatment, as available at the community level.

## RESULTS FRAMEWORK





## DELIVERY STRATEGIES



### Faith Actors

SCOPE works at the community level to build faith leaders' and faith communities' capacity to engage with critical issues and increase support for improved care-seeking RMNCH behaviors.

### Community Groups

By engaging communities through Care Groups and Couples' Groups, SCOPE will diffuse social behavior change RMNCH messages through SCOPE-supported communities for social norm change.

### Community Health Workers

SCOPE is training community health workers in the delivery of community-based family planning, community-based maternal-newborn care (including home-based postnatal care), and prevention of common childhood illnesses to be effective service providers of community-based information and services. SCOPE also provides a low-dose high-frequency approach to coaching and mentoring to reinforce skills and knowledge over the project life-cycle. In addition to training, mentoring and supervision, SCOPE also works to strengthen community-facility linkages by strengthening case-finding and quality/number of referrals, bolster community data integration efforts, including (including data quality assessments for quality improvement) and ensure linkages to ministry of health/NGO outreaches.

### SCOPE COUNTRIES

The SCOPE project is working in Haiti, Kenya, Malawi and South Sudan with sub-regional foci selected based on priority areas according to ministry of health stakeholders, epidemiologic need, lack of similar investments, and the ability to leverage existing World Relief presence.

### CONTACT

Eeva Sallinen Simard, SCOPE Chief of Party  
esimard@wr.org  
[worldrelief.org](http://worldrelief.org)

