

# SCOPE

STRENGTHENING COMMUNITY HEALTH OUTCOMES THROUGH POSITIVE ENGAGEMENT

## SUMMARY

SCOPE was a five-year reproductive, maternal, newborn and child health (RMNCH) project that worked to ensure that women and caretakers adopted healthy behaviors and sought necessary care, and that quality and accessible community health services were available for all mothers and children.

## PROGRAM GOAL

Contribute to the reduction of preventable maternal and child mortality and morbidity.

## PROGRAM COUNTRIES

Haiti, Kenya, Malawi, South Sudan

## PERIOD OF PERFORMANCE

October 2019 - March 2024

## DONOR

USAID/New Partnerships Initiative (NPI)

## PARTNERS

Christian Connections for International Health  
Organization for People's Empowerment and Needs

## TECHNICAL INTERVENTIONS

SCOPE focused on technical interventions vital to the wellbeing of women of reproductive age (WRA) and children under five, including family planning and reproductive health, maternal and newborn health, and the prevention and treatment of childhood illnesses.

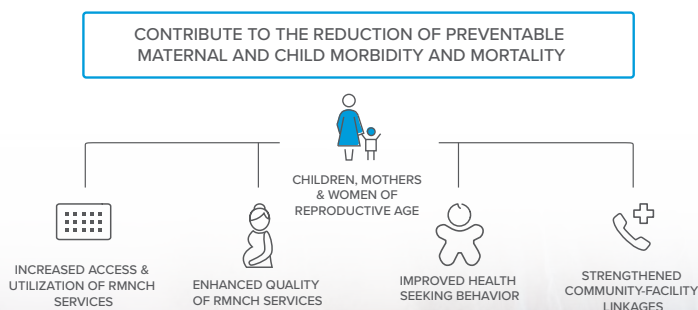
### Family Planning and Reproductive Health

SCOPE's strategies of engaging community health workers (CHWs), community groups, and faith leaders to improve the health of WRA and their young children included a focus on reproductive health. SCOPE utilized different social behavior change communication strategies to address barriers and enablers to the access to and utilization of modern contraceptive methods. The strategies within SCOPE include proven interventions, such as community-based distribution of family planning information, commodities, and referrals for long-acting reversible conception and long-acting and permanent contraception methods, postpartum family planning, community support for family planning, couples' communication, and strengthening individual knowledge, attitudes, beliefs, and self-efficacy.

### Maternal and Newborn Care

SCOPE promoted antenatal and postnatal care visits (early and consistent care-seeking during and after pregnancy) to support healthy pregnancy and safe motherhood. SCOPE interventions directly supported **improved access** to community-based contacts and the **quality of care** pregnant woman received from CHWs. CHWs were equipped to provide timed and targeted messages for pregnant women and those with newborns, as well as home-based postnatal care and essential newborn care, per Ministry of Health (MOH) guidelines. Care Groups (a peer-mother community group) were also a key platform for sharing health messages amongst pregnant women and mothers of young children, and served as additional **linkages to their nearest CHWs**.

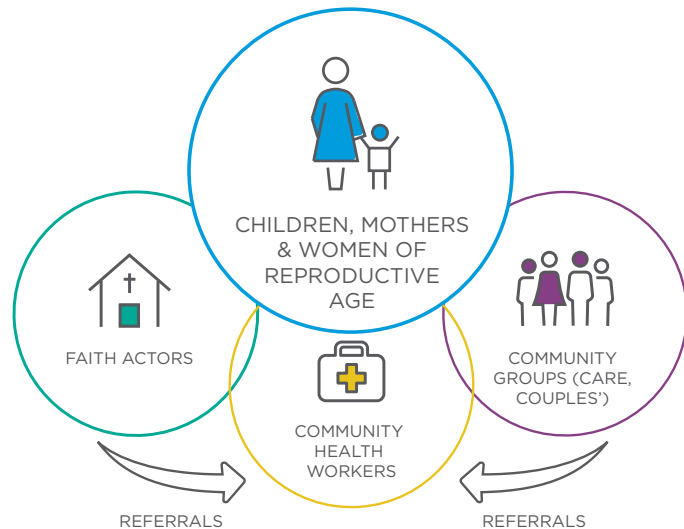
## RESULTS FRAMEWORK



## Prevention and Appropriate Treatment of Childhood Illness

More than half of child deaths are due to preventable or treatable conditions, such as diarrhea, pneumonia, and malaria. SCOPE contributed to **increased care-seeking behavior** for sick children through CHW visits and Care Group lessons that discussed the nature and prevention of common childhood illnesses, and the importance of seeking timely medical care. The Project also trained CHWs on how to administer appropriate treatments at the community level where supplies were accessible.

## DELIVERY STRATEGIES



### Community Health Workers

SCOPE strengthened **CHW** capacity to improve **access to high-quality RMNCH information and services** through capacity building and supportive supervision. By working closely with MOH stakeholders to train, equip, support, and mentor CHWs, SCOPE's work enabled them to provide essential community-based services in family planning, deliver care for expectant mothers and infants, and prevent childhood illnesses. SCOPE also adopted a coaching and mentoring approach to supervising CHWs to reinforce their skills and knowledge over time. Lastly, SCOPE supported **strong**

**linkages between CHWs and healthcare facilities** by strengthening their abilities in case-finding, making referrals, integrating community data, and facilitating outreach efforts by the MOH and other non-governmental organizations.

### Faith Actors

Faith communities and **faith leaders** play crucial gatekeeping and influencer roles in the success of community-based work in developing countries. However, in regard to health-related issues, faith actors often lack the skills and information needed to engage in helpful ways. Over the past ten years, World Relief has developed a model of faith-led community development that engages faith leaders in building sustainable community structures for health and other social services. SCOPE partnered with local faith institutions to enhance their proficiency in addressing critical health issues and promote improved care-seeking behaviors related to RMNCH in their communities. Each faith actor was equipped to not only communicate and **increase access** to family planning and reproductive information, but also **serve as a linkage** to the health system.

### Community Groups

SCOPE engaged with local communities through **Care Groups** and **Couples' Groups** to disseminate RMNCH messages, foster widespread social norm change, and to further linkages to the health system. Through SCOPE, these Community Groups extended the reach of the health-system all the way down to the household level, ensuring that even the most vulnerable members of the community understood how and when to access services.

## SCOPE COUNTRIES

The SCOPE project was implemented in Haiti, Kenya, Malawi and South Sudan - four USAID priority countries, each of which offered a diversity of geographical, political, and cultural backgrounds. It was influenced by MOH stakeholders, epidemiological needs, the absence of similar investments by other partners or donors, and the opportunity to leverage the existing presence of World Relief.

**CONTACT:** [InfoInternational@wr.org](mailto:InfoInternational@wr.org)

