


world relief 



FOR SUCH A TIME AS THIS

Annual Report

October 2023-September 2024

Dear friends,

This was a historic year at World Relief. As the number of people forced to flee their homes continued to break records, we marked 80 years of responding alongside the church to the world's greatest crises. Born from a movement of churches sending aid to refugees in Europe after World War II, we boldly carried our mission into 2024.

From Sudan to Ukraine, the Middle East to the U.S., the church rose to meet critical needs. Because of faithful partners like you, families displaced by war found safety, children in crisis received care and communities around the world became places of refuge, healing and hope. In every challenge, the church stepped forward, demonstrating Christ's love in tangible ways.

In the U.S., we resettled more refugees than ever before, equipped churches to walk alongside their newest neighbors through Churches of Welcome and mobilized leaders to advocate

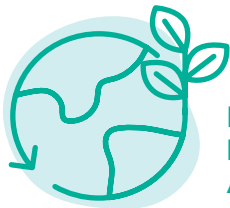
for just and compassionate immigration policies. Globally, we pursued innovative solutions to some of the world's toughest challenges, like addressing food insecurity in Kenya and launching Early Childhood Development centers in refugee camps in Burundi.

As you read this year's report, I hope you see more than numbers. I hope you see lives forever changed and Christ at work through you. Together, we are building a world where the most vulnerable are seen, cared for and empowered to flourish. Thank you for your generosity and unwavering commitment to sharing Christ's love in a hurting world.



With gratitude,

MYAL GREENE
World Relief
President & CEO



INTRODUCING A MORE SUSTAINABLE ANNUAL REPORT

At World Relief, we recognize that the world's poor often bear the biggest burdens of environmental harm. As part of our commitment to creation care, we've reduced the page count of this report to save resources and shrink our carbon footprint while still sharing the stories of transformation you make possible.

➤ **Want to read more? Just follow the links and QR codes to dive deeper into your FY24 impact online.**

We've reached a new milestone!

In August 2024, World Relief achieved Core Humanitarian Standard (CHS) certification, a global benchmark for quality and accountability in humanitarian work.

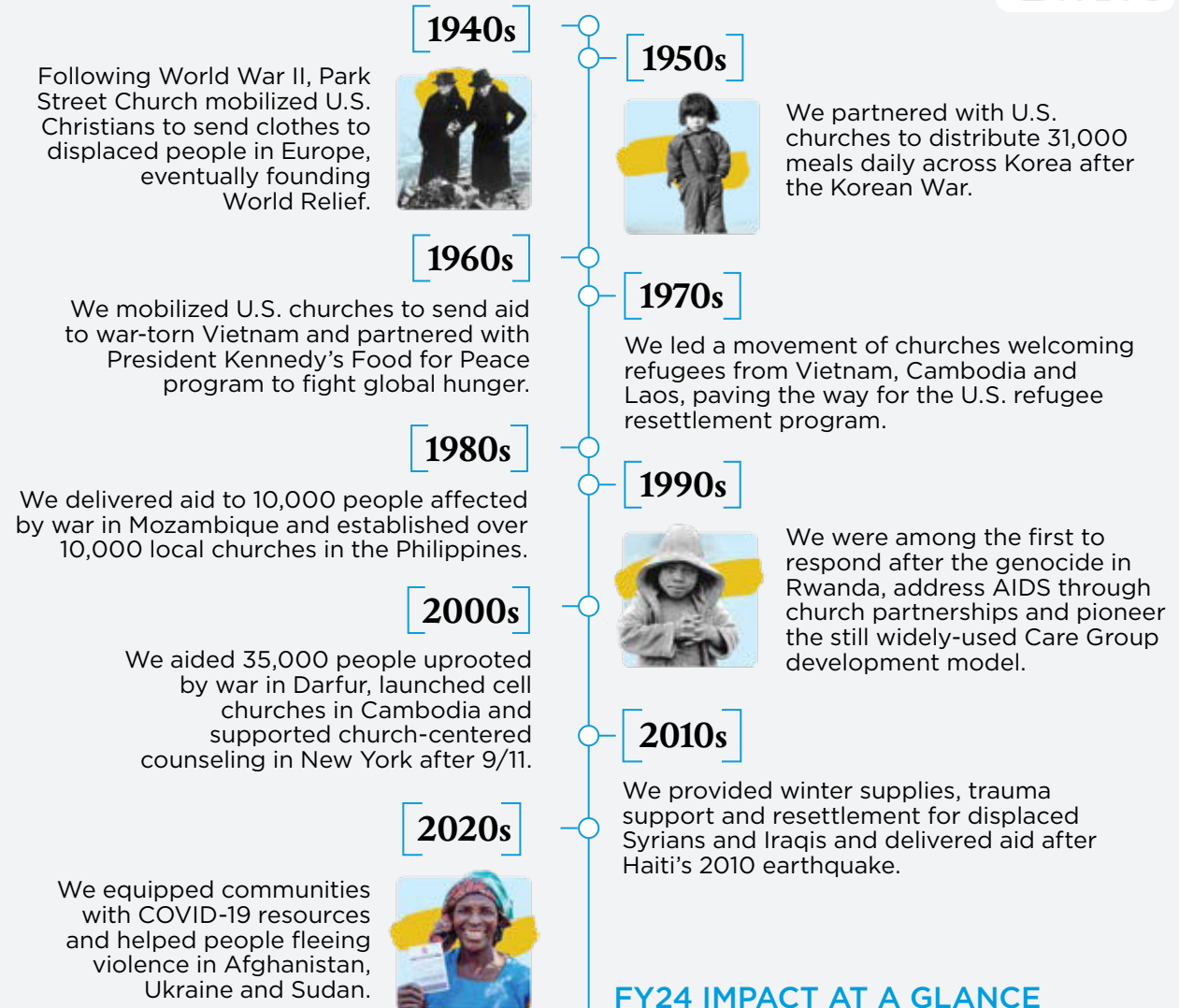
Learn more about what CHS certification means for us at:
[wr.org/ar-chs](https://www.worldrelief.org/ar-chs)



Celebrating 80 Years

of boldly engaging the world's greatest crises in partnership with the church ...

Read more about our legacy of faith and action alongside local churches at: wr.org/ar-80



FY24 IMPACT AT A GLANCE

3,342,413

people served globally

40,460

immigrants served in the U.S.

26,996

volunteers engaged

4,500+

churches mobilized

76%

of those served internationally

& 66%

of those served in the U.S. were women and children



122,000,000+

DISPLACED PEOPLE

With over 122 million people forced to flee their homes, the world is facing the greatest displacement crisis in history. At World Relief, we're responding to this urgent need in countries around the world, including in crisis "hot spots."

What's Driving Mass Displacement?

Mass displacement is fueled by conflict, violence, persecution, poverty and climate-related disasters. Wars like those in Ukraine, Sudan and the Middle East force millions to flee their homes. Persecution and human rights violations push others to seek safety beyond their borders. Meanwhile, climate-related disasters, such as droughts and floods, are displacing growing numbers of people.

While some find refuge in other countries as refugees or asylum-seekers, most remain displaced within their own nations. At World Relief, we're creating resilience in communities at risk of these disruptive events and supporting displaced individuals with lifesaving aid and long-term solutions for rebuilding their lives.



Read more about the drivers of mass displacement: [wr.org/ar-blog](https://www.wr.org/ar-blog)



UNITED STATES SOUTHERN BORDER

6

5



HAITI

WHO ARE THE DISPLACED?

Souzan had everything — wealth, security, a future. But she couldn't worship freely. In Iran, following

Jesus put her family in danger. Forced to flee for their lives, they spent 12 years in limbo in Indonesia, waiting for a safe place to call home. In 2023, Souzan and her children were resettled by World Relief Spokane. Now, they can worship freely for the first time in years.





UKRAINE

4

3

2

1



CHAD + SUDAN



MIDDLE EAST
Photo via ZOA | 2024



DR CONGO



Willie was just 13 when he fled the Democratic Republic of Congo, escaping an attack on his family.

Alone and unsure if his parents survived, he's spent years navigating life in Kenya's Kakuma refugee camp. While battling tuberculosis in 2023, he received lifesaving medical treatment and counseling from World Relief. Now recovered, Willie is helping fellow refugees in Kakuma find hope and healing.



Daniela and her family fled Venezuela after her work with the police put them in danger.

With two children with disabilities, they endured a grueling journey through the Darién Gap before reaching the U.S., claiming asylum and being bussed to Chicago. World Relief Chicagoland's Southern Border Arrivals team helped them navigate shelter life, access medical care and secure housing — building a foundation for a safer future.

Building Communities of Resilience

Imagine a world where families flourish and people experience restored relationships with God, their neighbors, themselves and all of creation. As millions are caught in cycles of conflict, climate crises and poverty around the world, this is the vision we're making possible at World Relief.

In FY24, we took bold action alongside local churches and partners to help communities stand strong against the forces driving mass displacement and suffering in some of the world's most vulnerable places.

In Turkana, Kenya, where severe drought has led to urgent food insecurity, we worked with faith and community leaders to build climate resilience and improve nutrition. In Burundi, we honored our 80-year legacy of caring for the displaced by bringing early childhood education and family empowerment programs to refugee camps. And in places like Malawi, Burundi and Rwanda, we celebrated the graduation of churches from our Church Empowerment Zone programs, knowing they will create sustainable, holistic change in their communities for generations to come.

Together, we're creating flourishing futures for families around the world.



119,862

children under 6 got a healthier start through health and nutrition programs



166,840

farmers equipped with improved farming practices



564,833

people gained access to clean water



HOPE IN DROUGHT COMES FROM UNLIKELY PLACES

In Turkana, Kenya, Rose found hope in a tiny insect. She was among a group of women selected to try an innovative solution to a critical agricultural challenge: accessing nutritious chicken feed in a drought-stricken environment. The surprising solution? Black soldier fly larvae. Rich in protein and fat, this sustainable feed ensures her hens lay nutritious eggs for her family to eat and sell. **“God has heard my prayers,”** Rose shared. **“Now I have a way to feed my hens forever.”**

+ Learn how tiny fly larvae are making a big impact on climate challenges: wr.org/ar-kenya



EARLY CHILDHOOD DEVELOPMENT CENTERS SHARE THE POWER OF A FATHER'S PRESENCE

Kabale wanted to be a good dad. But when conflict in DR Congo forced his family to flee, he found himself without work and uncertain of how to care for them. At World Relief's Early Childhood Development (ECD) center in Nyankanda refugee camp, Burundi, he learned the value of just being present. **“Now I understand that my love and support are just as important as providing food and shelter,”** he shared.

+ In FY24, we launched nine ECD centers serving communities impacted by displacement in Burundi, reaching 750 children under the age of four. Read more: wr.org/ar-early-childhood



CHURCHES PARTNER TO SHINE JESUS' LIGHT

Can churches still bring hope and healing in the midst of crisis? Bosco and his wife, Nyiranzabandora, would answer with a resounding, **“Yes!”** After nine years of separation, their marriage was restored and their faith renewed when their local church joined a World Relief-initiated Church Empowerment Zone (CEZ) and launched ministries focused on strengthening families. In the face of global and personal crises, CEZs are a powerful model for how churches can unite to meet urgent physical and spiritual needs.

+ In FY24, we celebrated the graduation of 586 CEZ churches in Malawi, Kenya, Rwanda and Burundi! Read more: wr.org/ar-cez

Supporting Communities on the Move

War in the Middle East. Famine and conflict in Sudan. Gang violence in Haiti. Earthquakes, drought and flooding around the world. Today, an increasing number of disasters are fueling a devastating migration crisis — the likes of which our world has never seen. More people than ever in recorded history, and almost three times more than just a decade ago, have been forced to flee for their lives and desperately seek refuge in a country or community not their own. Tragically, more than 40% of these are children.

For over 80 years, World Relief has been responding on the front lines to global displacement — both in the U.S. and abroad. And in FY24, we remained unwavering in our commitment to families and individuals forced to flee their homes. Through our distinct “here and there” approach, we mobilized our network of churches, partners and local volunteers to deliver emergency humanitarian aid in the wake of disasters and help displaced people rebuild hope in both global and U.S. communities. Around the world, we showed refuge-seeking communities the love of Jesus in the midst of crisis.

Together, we’re forging pathways to flourishing for families on the move.



62,542

Palestinians and Israelis served in the Middle East



13,108

immigrants in the U.S. received legal assistance



690,003

medical consultations provided at 59 World Relief-operated clinics in Sudan

RESPONDING IN THE MIDDLE EAST: “GOD HAS NOT FORGOTTEN US”

Photo by Ibrahim Zaanoun via IHP, 2023.

For the Al Abdallah* sisters from Gaza, the cost of war has been great. Forced to flee their home, the elderly women sought refuge in an empty apartment in Egypt. For three months, no one visited — no shared cups of tea, no one to check in — until members of Kasr El Dobara Evangelical Church in Cairo heard about the sisters and were moved to respond. With financial support from World Relief, they supplied furniture and bedding. Perhaps most healing was the company they shared. **“God has not forgotten us,”** the sisters said. **“That’s why he sent you to us — to show us his presence even in our hardships.”**

**name changed*



✚ In FY24, we partnered with local ministries to supply urgent aid in the Middle East. Learn more at: wr.org/ar-middle-east

COMPELLED BY GOD’S LOVE TO RESPOND IN SUDAN

In Sudan, more than 11 million people have fled their homes since war broke out in April 2023. It’s the largest displacement crisis of our time. Even as others withdrew from Sudan, we were compelled to move toward the afflicted. As Jawahir shared, **“At a time where all people were in urgent need, we found World Relief.”**

In FY24, we reached 815,258 people in Sudan with lifesaving aid. We also welcomed 580 Sudanese refugees in the U.S. Read more: wr.org/ar-sudan



BOLDLY ENGAGING THE CRISIS IN HAITI, HERE AND THERE

In February 2024, gang violence and political unrest engulfed Haiti’s capital, Port-au-Prince. Within months, over 700,000 Haitians had been forced to flee their homes. Many humanitarian actors left, but World Relief remained. For over 35 years, we have stood by the Haitian people in their home country and in cities across the U.S. where Haitians have sought safety, and we continue to do so.

In FY24, we reached over 210,400 people in Haiti with emergency aid and more. In the U.S., we welcomed 213 Haitians seeking safety. Read more: wr.org/ar-haiti



Creating Communities of Welcome

In Matthew 25, Jesus tells his followers, **“I was hungry and you gave me something to eat, I was thirsty and you gave me something to drink, I was a stranger and you invited me in ... Truly I tell you, whatever you did for one of the least of these brothers and sisters of mine, you did for me.”** At World Relief, we take Jesus’ call to welcome the stranger to heart. When families arrive in the U.S. seeking relief from persecution and suffering, we partner with local churches to cultivate communities of welcome and belonging.

FY24 was a historic year as we walked alongside refugees, other immigrants and the communities that journey with them on the path

toward hope and healing. We celebrated the launch of Churches of Welcome, a movement of U.S. churches responding to welcome the stranger. We also expanded our support through innovations like virtual resettlement and private sponsorship to help refugees and welcoming communities in more locations than ever before. **In God’s timing, this movement began just as we were receiving the highest number of refugee arrivals in our history.**

Together, we’re opening our arms to embody the welcoming love of Jesus.



12,328

refugees and Special Immigrant Visa (SIV) holders resettled



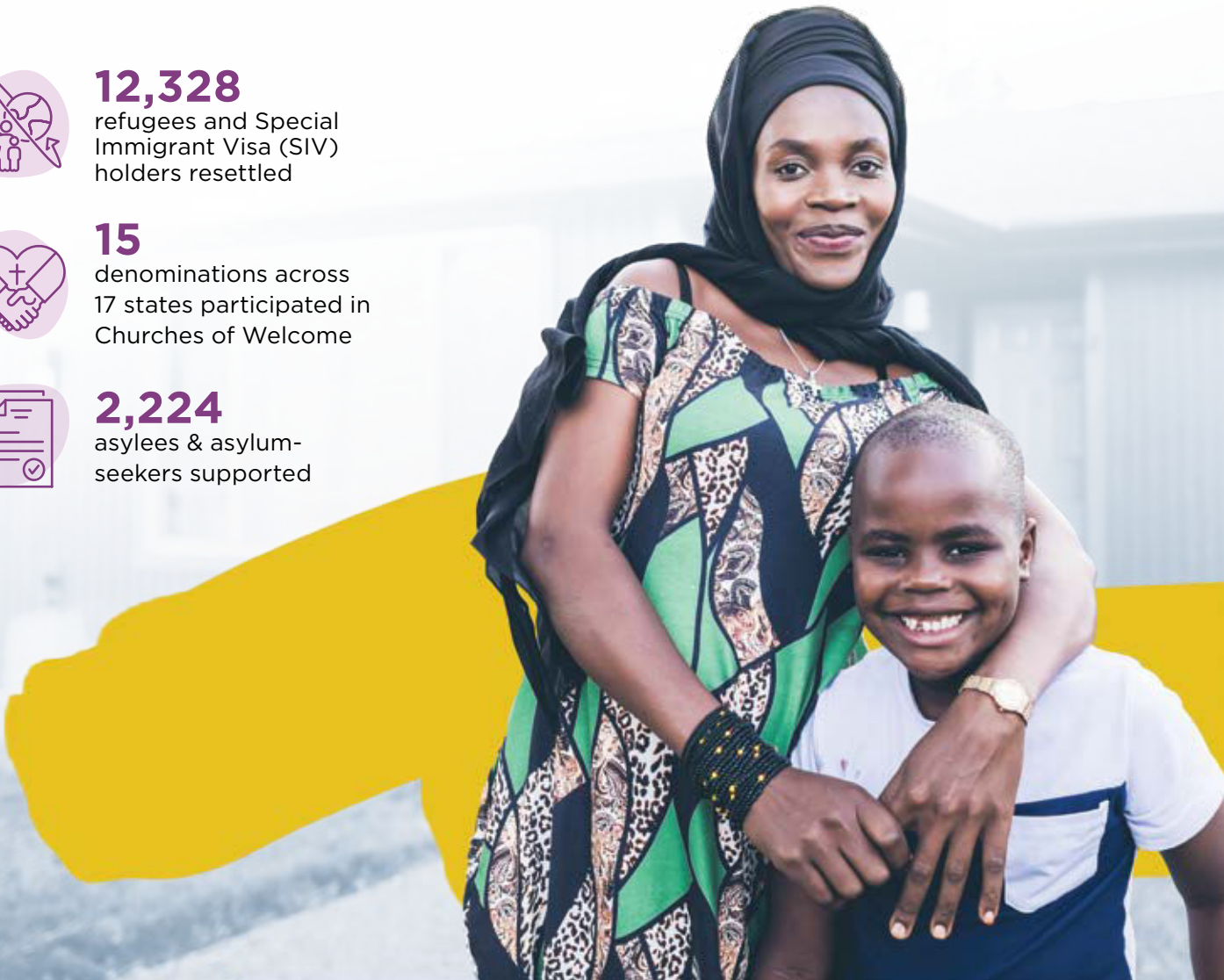
15

denominations across 17 states participated in Churches of Welcome



2,224

asylees & asylum-seekers supported

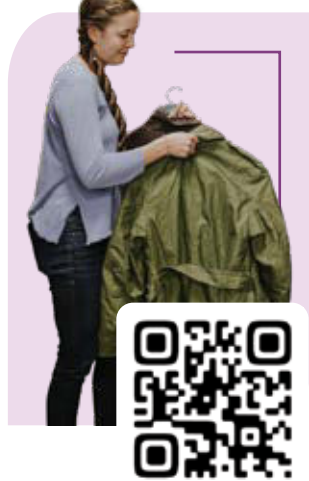


CHICAGOLAND CHURCHES STEP UP TO HELP ASYLUM-SEEKERS

Anna*, an asylum-seeker from Eastern Europe and mother to a 7-month-old daughter, faced an uncertain future when she reached the end of her stay at a temporary shelter. Thankfully, the church stepped in. In partnership with World Relief Chicagoland, local churches came around Anna to provide housing, love and support as she navigated the asylum process. **“I’ve never experienced such kindness,”** she shared.

**name changed*

Learn how World Relief Chicagoland and local churches responded to help asylum-seekers: wr.org/ar-chicagoland



UNITING U.S. CHURCHES IN WELCOME AND ADVOCACY

In FY24, immigration remained a national focus in the U.S. In response, we partnered with church leaders across the country to advocate on behalf of their refugee and immigrant neighbors, laying the foundation to launch Churches of Welcome, an innovative discipleship journey equipping churches to welcome the stranger.

“Churches of Welcome is about mobilizing the church to live out its biblical calling,” says Daniel Yang, national director. Through advocacy, discipleship and service, churches took bold action — meeting with lawmakers, mobilizing congregations and walking alongside immigrants in their communities.

As policies shifted and needs grew, the church led with compassion and conviction. Read more: wr.org/ar-churches



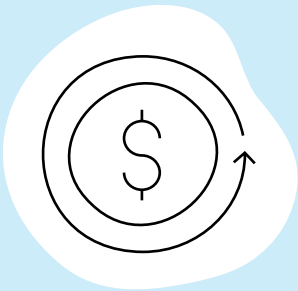
A HISTORIC CRISIS, A HISTORIC RESPONSE

The call to welcome the stranger has never been more urgent. In FY24, we met this moment by welcoming more refugees than ever before. This was made possible by the dedication of our U.S. offices and innovations that expanded our reach. Through virtual resettlement, we supported refugees in communities without World Relief offices. We also partnered with the Welcome Corps, a new federal program allowing private citizens to sponsor resettling refugees, to expand our Good Neighbor Team model and equip sponsor groups to walk alongside refugees rebuilding their lives.



For families like the Ibrahims, a welcoming community was a lifeline. Read more: wr.org/ar-historic-response





A LEGACY THAT LASTS CREATES CHANGE THAT LASTS

When you include World Relief in your will or trust, you do more than give — you ignite lasting change. Your estate gift empowers families experiencing vulnerability to flourish, strengthens communities with sustainable solutions, and extends God's love where it's needed most.

Leave a humanitarian impact of justice, mercy and hope for generations to come.



Start or update your
legacy journey with
World Relief today:
wr.org/legacy



The Joy of Giving With Connie Weaver

Growing up on a farm, Connie Weaver didn't really like chickens — but she knew how well they could provide for a family. That's why, when she and her husband, Jack, first connected with World Relief, she got excited about a project helping families in Turkana, Kenya, raise chickens.

That personal connection started Connie and Jack on a journey of generous partnership, supporting clean water, sustainable agriculture and more. In 2023, we grieved Jack's passing with Connie, and today, we're honored to continue walking alongside her as she finds faith and joy in God's work through World Relief.

Connie shared, “Jack always said, ‘God has a bigger shovel.’ We give money out, and then God just gives it back to us — or even more than we gave. ... For little old me in Wheaton, Illinois, to be able to change lives in Africa — now if that doesn't bring me joy, then there's something wrong with me!”



Read Connie's full
Q&A at: wr.org/ar-connie

Looking Forward

We look back on our work in 2024 with gratitude and joy for all we accomplished together. And yet, as we prepared to release this year's report, we could not let the moment pass without speaking into our current reality.

The challenges are immense, and the reality is sobering. U.S. policy changes have dramatically reduced federal support for vulnerable communities around the world. Refugee families are separated from loved ones. Clinics and food programs have been shuttered in fragile communities. Converging crises like conflict and climate disasters continue to escalate.

But here's the good news: We believe World Relief was created for such a time as this. **And so were you.** Today, even as we grieve the impact of these policies, we are meeting this critical moment with a renewed sense of calling. Our organizational strategy and careful annual planning prepared us for many of these adversities. We have a clear plan to pivot programs and adjust operations to focus on our mission-critical and lifesaving work.

Simultaneously, we are witnessing an outpouring of support from our partners. You have refused to look away. The church is rising up, and we will meet this moment hand-in-hand. The stories in this report demonstrate what's possible when we act together. But we can't do this work without you. Will you continue to join us in this God-inspired work?

GET INVOLVED

This work wouldn't be possible without people like you! Scan the QR code to give, volunteer and stay connected, or visit: wr.org/ar-join-us



CURRENT LEADERSHIP

Executive Committee

Myal Greene
President and CEO

Dick Oyieko
Chief Financial Officer (CFO)

Kevin Sanderson
Chief Administrative Officer (CAO)

Lanre Williams-Ayedun
SVP of International Programs

Aerlande Wontamo
SVP of U.S. Programs

Francesca Albano
VP of Marketing and Brand

Matthew Soerens
VP of Advocacy and Policy

Jeff Walser
VP of Strategic Engagement

Board of Directors

Erin Donovan, Board Chair

Myal Greene

Galen Carey

Carrie Tibbles

Walter Kim

José Velázquez

Matthew P. Gerkens

Dakota Pippins

George Hu

Patrick Mazorol

John Cusey

Mindy Belz

JoAnn Flett

David Vazquez

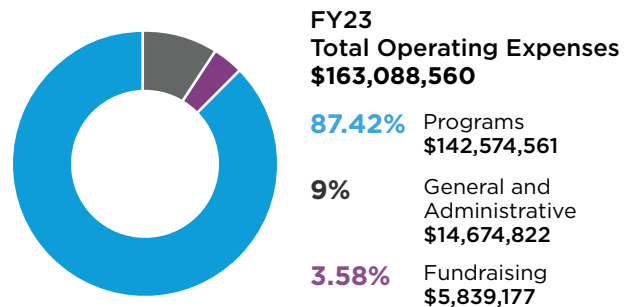
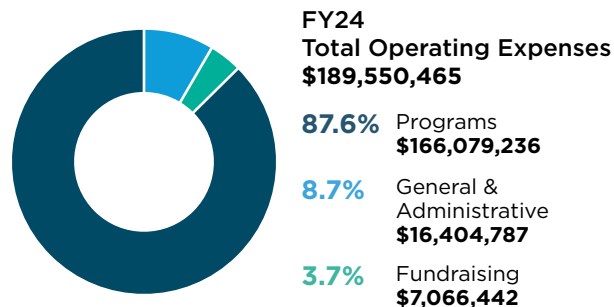
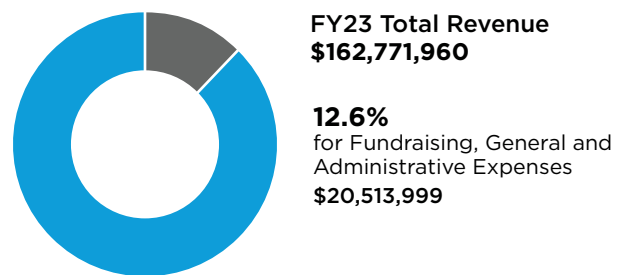
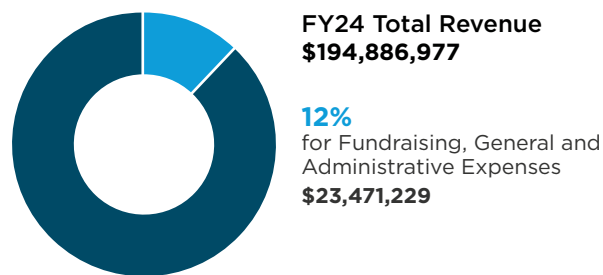
Jacoba Langerak

Liz Dong

Durmomo Gary

Helen Kaminski

FINANCIAL SUMMARY



STATEMENT OF FINANCIAL POSITION | *For the year ending Sept. 30, 2024*

CURRENT ASSETS	2024	2023
Cash and Cash Equivalents	\$25,871,388	\$29,992,247
Investments, at Market	537,669	429,251
Grants Receivable	24,372,807	17,304,412
Prepaid Expenses and Other Assets	5,063,637	662,765
Minority Interest in Net Assets	1,303,712	1,391,184
Right-of-Use Assets	3,881,567	3,037,206
Plant and Equipment — Net of Accumulated Depreciation	5,137,271	4,610,561
Total Assets	\$66,168,051	\$57,427,626
LIABILITIES		
Accounts Payable and Accrued Liabilities	14,560,989	11,581,629
Deferred Revenue	10,823,401	10,608,424
Operating Lease Liabilities	3,881,567	3,037,206
Total Liabilities	\$29,265,957	\$25,227,259
NET ASSETS		
Common Stock	1,000	1,000
Net Assets	27,880,445	24,148,940
Total Net Assets Without Donor Restrictions	27,881,445	24,149,940
Net Assets with Donor Restrictions	9,020,649	8,050,427
Total Net Assets	36,902,094	32,200,367
Total Liabilities and Net Assets	\$66,168,051	\$57,427,626

STATEMENT OF ACTIVITIES AND CHANGES IN NET ASSETS

For the year ending Sept. 30, 2024

SUPPORT & REVENUE	Without Donor Restrictions	With Donor Restrictions	2024 Total	2023 Total
Private Contributions of Cash and Other Financial Assets	\$15,772,250	\$18,198,857	\$33,971,107	\$32,190,725
Contributions of Nonfinancial Assets	5,208,487	-	5,208,487	2,205,642
Government and Other Public Grants	152,985,187	-	152,985,187	126,026,563
Other Revenue	2,722,196	-	2,722,196	2,349,030
Net Assets Released from Restrictions	17,228,635	(17,228,635)	-	-
Total Support and Revenue	\$193,916,755	\$970,222	\$ 194,886,977	\$162,771,960
EXPENSES				
Program Ministries				
USA Programs	119,861,963	-	119,861,963	90,697,725
Overseas Programs	28,157,941	-	28,157,941	34,952,522
Disaster Response	18,059,332	-	18,059,332	16,924,314
Total Program Ministries	166,079,236	-	166,079,236	142,574,561
Support Ministries				
General and Administrative	16,404,787	-	16,404,787	14,674,822
Fundraising	7,066,442	-	7,066,442	5,839,177
Total Support Ministries	23,471,229	-	23,471,229	20,513,999
Total Expenses	\$189,550,465	-	\$189,550,465	\$163,088,560
Excess of Revenue Over Expenses	\$4,366,290	970,222	5,336,512	(\$316,600)
OTHER CHANGES				
Realized and Unrealized Gain on Minority Interest in Net Assets	7,482	-	7,482	(16,806)
Gain on Sale of Fixed Assets	(58,777)	-	(58,777)	1,116,431
Loss on Foreign Currency Translation	(583,490)	-	(583,490)	(484,321)
Other losses (gains)	-	-	-	(313,438)
Change in Net Assets	3,731,505	970,222	4,701,727	(\$14,734)
NET ASSETS				
Beginning of Year	\$24,149,940	\$8,050,427	\$32,200,367	\$32,215,101
End of Year	\$27,881,445	\$9,020,649	\$36,902,094	\$32,200,367

Where We Work

OCTOBER 2023-SEPTEMBER 2024



PROGRAM COUNTRIES

BURUNDI
CAMBODIA
CHAD
DR CONGO
HAITI
KENYA

MALAWI
RWANDA
SOUTH SUDAN
SUDAN
UKRAINE
UNITED STATES

PARTNER COUNTRIES

EGYPT
GAZA
ISRAEL
LEBANON
LIBYA

MEXICO
MOROCCO
SYRIA
TÜRKIYE



U.S. LOCATIONS

CALIFORNIA
Modesto
Orange County
Sacramento
San Diego

ILLINOIS
Aurora
Chicago
DuPage County
Rock Island County

IOWA
Scott County

MARYLAND
Baltimore

NEW YORK
Rochester

NORTH CAROLINA
Durham
High Point
Winston-Salem

SOUTH CAROLINA
Greenville
Spartanburg

TENNESSEE
Memphis

TEXAS
Austin
Dallas
Fort Worth

WASHINGTON
Spokane
Spokane Valley
Thurston County
Whatcom County
King County
Richland

WISCONSIN
Appleton
Eau Claire
Oshkosh

U.S. AFFILIATES

Alliance for Refugees – NJ
Arrive Ministries – MN
Bethany Christian Services – DE
Birmingham Cross Cultural Connections – AL
First 90 – FL
International Welcome Center – OH
Mission Adelante – KS
Pathways to Citizenship – CA
Rising Village – OK
Salem for Refugees – OR
Send Relief – MA

